

Common genetic variants highlight the role of insulin resistance and body fat distribution in type 2 diabetes, independently of obesity

Robert A Scott(1), Tove Fall(2), Dorota Pasko(3), Adam Barker(1), Stephen J Sharp(1), Larraitz Arriola(4,5,6), Beverley Balkau(7,8), Aurelio Barricarte(9,6), Inês Barroso(10,11), Heiner Boeing(12), Françoise Clavel-Chapelon(7,8), Francesca L Crowe(13), Jacqueline M Dekker(14), Guy Fagherazzi(7,8), Ele Ferrannini(15), Nita G Forouhi(1), Paul W Franks(16,17), Diana Gavrilă(18,6), Vilimantas Giedraitis(19), Sara Grioni(20), Leif C Groop(21,22), Rudolf Kaaks(23), Timothy J Key(13), Tilman Kühn(23), Luca A. Lotta(1), Peter M Nilsson(16), Kim Overvad(24,25), Domenico Palli(26), Salvatore Panico(27), J. Ramón Quirós(28), Olov Rolandsson(17), Nina Roswall(29), Carlotta Sacerdote(30,31), Núria Sala(32), María-José Sánchez(33,6,34), Matthias B Schulze (12), Afshan Siddiq(35), Nadia Slimani(36), Ivonne Sluijs(37), Annemieke MW Spijkerman(38), Anne Tjønneland(29), Rosario Tumino(39,40), Daphne L van der A(38), Hanieh Yaghootkar(3), The RISC study group, The InterAct consortium, Mark I McCarthy(41,42,43), Robert K Semple(11), Elio Riboli(35), Mark Walker(44), Erik Ingelsson(2), Tim M Frayling(3), David B Savage(11), Claudia Langenberg(1)*, Nicholas J Wareham(1)*

Running title:

Common genetic variants, body fat, insulin resistance and diabetes

Key words:

Genetics; type 2 diabetes; insulin resistance; insulin secretion; adipose expandability;

Affiliations:

(1) MRC Epidemiology Unit, University of Cambridge, Cambridge, United Kingdom, (2) Department of Medical Sciences, Molecular Epidemiology and Science for Life Laboratory, Uppsala University, Uppsala, Sweden, (3) Genetics of Complex Traits, University of Exeter Medical School, Exeter, UK, (4) Public Health Division of Gipuzkoa, San Sebastian, Spain, (5) Instituto BIO-Donostia, Basque Government, San Sebastian, Spain, (6) CIBER Epidemiología y Salud Pública (CIBERESP), Spain, (7) Inserm, CESP, U1018, Villejuif, France, (8) Univ Paris-Sud, UMRS 1018, Villejuif, France, (9) Navarre Public Health Institute (ISPN), Pamplona, Spain, (10) The Wellcome Trust Sanger Institute, Cambridge, United Kingdom, (11) University of Cambridge Metabolic Research Laboratories, Cambridge, UK, (12) German Institute of Human Nutrition Potsdam-Rehbruecke, Germany, (13) University of Oxford, United Kingdom, (14) Department of Epidemiology and Biostatistics, Vrije Universiteit Medical Center, Amsterdam, The Netherlands, (15) Department of Internal Medicine, University of Pisa, Pisa, Italy, (16) Lund University, Malmö, Sweden, (17) Umeå University, Umeå, Sweden, (18) Department of Epidemiology, Murcia Regional Health Council, Murcia, Spain, (19) Department of Public Health and Caring Sciences, Geriatrics, Uppsala University Sweden, (20) Epidemiology and Prevention Unit, Milan, Italy, (21) University Hospital Scania, Malmö, Sweden, (22) Institute for Molecular Medicine Finland FIMM, University of Helsinki, Helsinki, Finland, (23) German

1 Cancer Research Centre (DKFZ), Heidelberg, Germany, (24) Department of Public Health,
2 Section for Epidemiology, Aarhus University, Aarhus, Denmark, (25) Aalborg University
3 Hospital, Aalborg, Denmark, (26) Cancer Research and Prevention Institute (ISPO),
4 Florence, Italy, (27) Dipartimento di Medicina Clinica e Chirurgia, Federico II University,
5 Naples, Italy, (28) Public Health Directorate, Asturias, Spain, (29) Danish Cancer Society
6 Research Center, Copenhagen, Denmark, (30) Unit of Cancer Epidemiology, Citta' della
7 Salute e della Scienza Hospital-University of Turin and Center for Cancer Prevention (CPO),
8 Torino, Italy, (31) Human Genetics Foundation (HuGeF), Torino, Italy, (32) Unit of
9 Nutrition, Environment and Cancer, Cancer Epidemiology Research Program, and
10 Translational Research Laboratory, Catalan Institute of Oncology (IDIBELL), Barcelona,
11 Spain, (33) Andalusian School of Public Health, Granada, Spain, (34) Instituto de
12 Investigación Biosanitaria de Granada (Granada.ibs), Granada (Spain), (35) School of Public
13 Health, Imperial College London, UK, (36) International Agency for Research on Cancer,
14 Lyon, France, (37) University Medical Center Utrecht, Utrecht, the Netherlands, (38)
15 National Institute for Public Health and the Environment (RIVM), Bilthoven, The
16 Netherlands, (39) ASP Ragusa, Italy, (40) Aire Onlus, Ragusa, Italy, (41) Oxford Centre for
17 Diabetes, Endocrinology and Metabolism (OCDEM), University of Oxford, UK, (42)
18 Wellcome Trust Centre for Human Genetics, University of Oxford, Oxford, UK, (43) Oxford
19 NIHR Biomedical Research Centre, Oxford, UK, (44) Institute of Cellular Medicine,
20 Newcastle University, Newcastle upon Tyne, UK
21

22 **Corresponding author:**

23 Dr Robert Scott

24 MRC Epidemiology Unit

25 University of Cambridge School of Clinical Medicine

26 Box 285 Institute of Metabolic Science

27 Cambridge Biomedical Campus

28 Cambridge

29 CB2 0QQ

30 Direct line: +44 (0)1223 769216

31 Email: robert.scott@mrc-epid.cam.ac.uk
32

33 ***These authors contributed equally to the manuscript**

34 **Word count: 3389**

35 **Table count: 1**

36 **Figure count: 4 (1a,1b,2,3)**
37

Abstract

We aimed to validate genetic variants as instruments for insulin resistance and secretion, to characterise their association with intermediate phenotypes, and to investigate their role in T2D risk among normal-weight, overweight and obese individuals. We investigated the association of genetic scores with euglycaemic-hyperinsulinaemic clamp- and OGTT-based measures of insulin resistance and secretion, and a range of metabolic measures in up to 18,565 individuals. We also studied their association with T2D risk among normal-weight, overweight and obese individuals in up to 8,124 incident T2D cases. The insulin resistance score was associated with lower insulin sensitivity measured by M/I value (β in SDs-per-allele [95%CI]: -0.03[-0.04,-0.01]; $p=0.004$). This score was associated with *lower* BMI (-0.01[-0.01,-0.0]; $p=0.02$) and gluteofemoral fat-mass (-0.03[-0.05,-0.02]; $p=1.4 \times 10^{-6}$), and with higher ALT (0.02[0.01,0.03]; $p=0.002$) and gamma-GT (0.02[0.01,0.03]; $p=0.001$). While the secretion score had a stronger association with T2D in leaner individuals ($p_{\text{interaction}}=0.001$), we saw no difference in the association of the insulin resistance score with T2D among BMI- or waist-strata ($p_{\text{interaction}} > 0.31$). While insulin resistance is often considered secondary to obesity, the association of the insulin resistance score with *lower* BMI and adiposity and with incident T2D even among individuals of normal weight highlights the role of insulin resistance and ectopic fat distribution in T2D, independently of body size.

1 Introduction

2
3 Type 2 diabetes (T2D) develops when insulin secretion is insufficient to maintain
4 normoglycaemia, often in the context of an obesity-induced increase in insulin demand i.e.
5 insulin resistance (1). Despite the importance of obesity as a risk factor for T2D, clinical
6 heterogeneity exists in pathways leading to T2D. A recent report from the InterAct study
7 showed that over 10% of incident cases of T2D occurred among individuals of normal weight,
8 and over 50% occurred in individuals who were non-obese at baseline (2). It was also shown
9 that waist circumference was associated with risk of T2D within BMI strata, suggesting that
10 for a given BMI the pattern of fat storage is an important determinant of T2D risk. Indeed,
11 being overweight, but with a high waist circumference made future risk of T2D comparable
12 to that of obese individuals (2).

13
14 Most genetic variants associated with T2D are implicated in beta-cell function (3). Recent
15 studies revealed a stronger effect of these variants on T2D in lean individuals (4),
16 highlighting the role of impaired insulin secretion in individuals who develop T2D in the
17 absence of obesity. The relative role of insulin resistance in T2D, independent of obesity, has
18 been more difficult to disentangle. This is partly attributable to the strong correlation between
19 obesity and insulin resistance and also because gold standard measures are seldom feasible in
20 large-scale prospective studies. Rare monogenic examples of severe insulin resistance in lean
21 patients have been described (5). Amongst these syndromes, patients with lipodystrophy
22 exhibit severe insulin resistance, metabolic dyslipidaemia and diabetes resulting from
23 impaired adipose tissue function. However, the role of common genetic variants associated
24 with insulin resistance in the aetiology of T2D, particularly among non-obese individuals
25 remains poorly documented.

1
2 Initial evidence that genetic approaches can highlight specific aetiological pathways comes
3 from recent investigations showing that individuals carrying body-fat-lowering alleles at the
4 *IRS1* locus are insulin resistant and have a higher risk of dyslipidemia, T2D and CHD (6). As
5 part of the Meta-Analyses of Glucose and Insulin-related traits Consortium (MAGIC), we
6 have recently identified 19 SNPs associated with fasting insulin (including *IRS1*), 10 of
7 which were also associated with a dyslipidaemic profile suggestive of a role in insulin
8 resistance (7,8). Such genetic variants allow the opportunity to investigate the correlates and
9 consequences of lifelong genetic susceptibility to insulin resistance and/or insulin secretion
10 independently of obesity (7–9).

11
12 This study therefore aimed to a) validate the use of recently identified common genetic
13 variants as specific markers for insulin resistance or secretion; b) characterise associations
14 between these variants and detailed metabolic measures including measures of body size, fat
15 mass and distribution; and c) use these instruments to investigate the contributions of insulin
16 resistance and secretion to the risk of T2D in normal-weight, overweight and obese
17 individuals.

Research Design and Methods

Cohort characteristics

Up to 1,374 (range by phenotype (N_{range}): 1136-1374) individuals without diabetes who attended phase 3 of the MRC Ely study (10) had relevant phenotypic measurements and genotyping from the Illumina CardioMetaboChip (MetaboChip). Up to 4,322 individuals from the Fenland study (11) without diabetes and with MetaboChip genotyping (N_{range} =2,618-2973) or imputed into 1000 Genomes (12) using Impute from the Affymetrix 5.0 genotyping chip (N_{range} : 1223-1357) were included. The definition of regional compartments in DXA data is shown in Supplementary Figure 1. We performed sensitivity analyses subtracting the gynoid component from leg estimates to avoid double-counting of gynoid mass. Up to 1,031 (N_{range} : 923-1031) individuals from the RISC study (13) who underwent a euglycemic-hyperinsulinemic clamp were included. Genotyping was performed at KBioscience and imputed into 1000 Genomes using MACH and minimac. Up to 909 (N_{range} : 884-909) non-diabetic participants from the ULSAM study (14) were included and had genotyping available from MetaboChip. Participants were of European ancestry. Participant characteristics and measurement availability for each study are shown in Table 1, while the number of participants included in each analysis is also shown in Figures 1-3.

We tested associations between genetic risk scores and incident diabetes in the EPIC-InterAct study (15), a case-cohort study nested within European Prospective Investigation into Cancer and Nutrition (EPIC) cohorts which includes 12,403 incident cases of T2D and a subcohort of 16,154 individuals (including 778 randomly selected incident T2D cases). A maximum of 18,676 participants (8,136 incident cases, 10,540 non-cases) had genotypes available from

the Metabochip (N=9,361) or Illumina 660W-Quad Chip (N=9,290) imputed into 1000 Genomes and were included in the current study. Up to 10,923 participants (N_{range} : 10,029-10,923) from the InterAct subcohort were also included in quantitative trait analyses (Table 1).

All participants gave written informed consent, and studies were approved by local ethics committees and the Internal Review Board of the International Agency for Research on Cancer.

Genetic risk scores

We created unweighted (i.e. per-allele) genetic risk scores for insulin resistance and impaired insulin secretion using effect alleles defined from the literature as shown in Supplementary Table 1. The insulin resistance genetic score comprised variants associated with fasting insulin in recent meta-analyses (8). In order to improve specificity we restricted the insulin resistance score to the 10 variants showing association ($p < 0.05$) with lower HDL and higher triglycerides (8,16): a hallmark of common insulin resistance. This excluded *TCF7L2*, associated principally with insulin secretion (17), and *FTO*, whose effect on insulin levels was entirely mediated by BMI (8). Variants included were those in or near the *IRS1*, *GRB14*, *ARL15*, *PPARG*, *PEPD*, *ANKRD55/MAP3K1*, *PDGFC*, *LYPLAL1*, *RSPO3*, and *FAM13A1* genes (Supplementary Table 1). For the insulin secretion score, from loci associated with T2D and related traits (18–21) we undertook literature searches to identify SNPs showing an association with impaired early insulin secretion. In addition, we investigated the literature to identify additional candidate genes associated with early insulin secretion. Up to 21 variants associated with decreased early insulin secretion were included in the insulin secretion score.

Where SNPs were missing, we included a proxy where available (Supplementary Table 1), and where no proxy was available, we did not impute missing SNPs. Each SNP, the reason for inclusion in the score and its availability in each study is shown in Supplementary Table 1. The genetic score distributions in each study are shown in for the insulin secretion and insulin resistance scores in Supplementary Figure 2a and b, respectively.

Statistical analysis

In order to meta-analyse data from multiple studies centrally, each study first natural-log transformed and standardised the phenotype, such that for each variable the mean was equal to zero and SD equal to one. Each study then fit linear regression models on each of these outcomes using the genetic risk scores as exposures, adjusted for age and sex (with and without adjustment for BMI). Genetic risk scores were unweighted and effect sizes expressed per fasting insulin-raising or insulin secretion-lowering allele, respectively. We investigated the association of these risk scores with euglycaemic-hyperinsulinaemic clamp (22) and OGTT-based measures of insulin sensitivity and secretion (23,24). We also investigated the associations of scores with glycaemia and insulinaemia during the OGTT, lipids, BMI, waist and hip-circumferences, and body fat percentage (assessed by bioimpedance in RISC, and by DXA in Fenland). We performed fixed-effect, inverse-variance weighted meta-analyses using Stata SE-12.1 software (StataCorp LP, College Station, TX). Associations with T2D in the InterAct study were investigated using Prentice-weighted Cox regression with age as the underlying time variable, adjusted for age at entry (to account for potential cohort effects), sex and centre of recruitment. BMI strata were defined by WHO cutoffs and waist circumference strata were defined by sex-specific tertiles. Interactions of risk scores with BMI and waist circumference were tested by including the product term of risk scores and

- 1 BMI categories or waist circumference tertiles. Effect sizes were expressed as hazard ratios
- 2 (HR) per-risk allele.
- 3
- 4

Results

Validation of genetic risk scores: associations with insulin sensitivity and secretion

The insulin resistance score was associated with lower whole-body insulin sensitivity based on the M/I value from euglycaemic-hyperinsulinaemic clamps (β in standard deviations per allele [95% CI]: -0.03 [-0.05, -0.02]; $p=0.004$) (Figure 1a) and with lower Matsuda index ($\beta = -0.03 [-0.04, -0.01]$, $p=2.2 \times 10^{-5}$) calculated from frequently-sampled OGTTs (Figure 1a). The score was not associated with insulinogenic index, but was associated with higher insulin levels throughout the OGTT ($p<0.001$) and higher levels of glycaemia, albeit only statistically significant for 2-h glucose (Figure 1a).

In contrast, the insulin secretion score was associated with lower insulinogenic index (-0.05 [-0.06, -0.04], $p=2.1 \times 10^{-14}$) and lower 30-minute insulin levels (-0.05 [-0.06, -0.03], $p=3.2 \times 10^{-13}$), but showed no associations with any of the measures of insulin resistance including M/I (0.00 [-0.01, 0.02], $p=0.59$), Matsuda index (0.00 [-0.01, 0.02], $p=0.40$) or fasting insulin (0.00 [-0.01, 0.01], $p=0.95$) (Figure 1b). Unlike the insulin resistance score, associations of the insulin secretion score with *lower* post-challenge insulin were accompanied by *higher* glucose levels at all time-points ($p\text{-values}<1.7 \times 10^{-4}$).

Associations with detailed anthropometric and metabolic traits

The insulin resistance score was strongly associated with both higher triglycerides (0.03 [0.02, 0.03], $p=3.5 \times 10^{-20}$) and lower HDL-cholesterol (-0.02 [-0.03, -0.02], $p=1.6 \times 10^{-14}$). It was also associated with lower BMI (-0.01 [-0.01, -0.00], $p=0.02$), smaller hip circumference (-0.01 [-0.02, -0.01], $p=4.4 \times 10^{-4}$) and lower body fat percentage (-0.01 [-0.02, -0.00], $p=0.02$) (Figure 1a). Also, the insulin resistance score was also associated with lower BMI when we

restricted analyses to incident cases of T2D in the InterAct study ($N=7577$; -0.02 [-0.03 , -0.01], $p=0.001$). Further investigation of detailed anthropometric measures obtained by DXA in Fenland participants highlighted inverse associations of the score with fat mass in different body compartments (Supplementary Figure 1). The strongest associations were observed for leg (-0.03 [-0.05 , -0.02], $p=1.4 \times 10^{-6}$) and gynoid fat mass (-0.03 [-0.04 , -0.02], $p=9.9 \times 10^{-6}$). These associations remained after excluding *PPARG* and *IRS1* variants from the genetic score (leg (-0.03 [-0.04 , -0.01], $p=1.2 \times 10^{-4}$) and gynoid fat mass (-0.03 [-0.04 , -0.01], $p=3.4 \times 10^{-4}$). Sensitivity analysis on leg fat mass removing the gynoid region, showed that the association remained highly significant (-0.03 [-0.05 , -0.02], $p=9.2 \times 10^{-7}$). For these associations, we saw similar magnitudes of association in men and women, which were statistically significant ($p<0.05$) in both genders. We also saw an association with arm fat mass (-0.02 [-0.03 , -0.00], $p=0.02$), but not with lean mass measurements (Figure 2).

In order to investigate the possibility that lower levels of gluteofemoral fat mass might limit subcutaneous fat storage and hence increase ectopic fat deposition, we also investigated the association of the insulin resistance score with estimates of liver damage. The score was associated with both higher ALT (0.02 [0.01 , 0.03], $p=0.002$) and gamma-GT (0.02 [0.01 , 0.03], $p=0.001$). The insulin resistance score was not associated with self-reported alcohol intake ($p=0.66$) and associations with liver enzymes were unchanged after adjustment alcohol intake (ALT: 0.02 [0.01 , 0.04], $p=0.002$. gamma-GT: 0.02 [95% CI 0.01 , 0.04], $p=0.003$).

The insulin secretion score was not associated with triglycerides or HDL-cholesterol ($p>0.1$), nor with any of the anthropometric traits ($p>0.18$) (Figure 1b). The secretion score was nominally associated with higher android fat mass ($p=0.04$), but with no other parameters in

the DXA data. We saw a weak association of the insulin secretion score with higher levels of ALT (0.01 [0.00, 0.02], $p=0.02$), but not gamma-GT (0.00 [-0.00, 0.02], $p=0.24$).

Associations with T2D

Both the insulin secretion (Hazard ratio (HR) [95% CI]: 1.09 [1.07, 1.11]; $p=8.0 \times 10^{-30}$) and resistance scores (1.08 (1.06, 1.10); $p=4.0 \times 10^{-15}$) were associated with incident T2D (Figure 3). To investigate the relative importance of genetically predicted insulin resistance and secretion on T2D incidence at different levels of BMI, we examined the effect of the score on incident T2D in normal-weight, overweight and obese individuals and found no difference in associations between strata (normal-weight: HR=1.07 [1.04, 1.11], $p=1.3 \times 10^{-4}$; overweight: HR=1.08 [1.05, 1.10], $p=4.7 \times 10^{-9}$; obese: HR=1.06 [1.03, 1.09], $p=1.0 \times 10^{-4}$; $p_{\text{interaction}}=0.58$) (Figure 3). Nor was there any difference between strata of waist circumference ($p_{\text{interaction}}=0.31$) (Figure 3). In contrast, the insulin secretion score showed an interaction with waist circumference on the risk of T2D ($p_{\text{interaction}}=0.001$). The association was stronger in individuals with smaller waist circumference than in those with large waist circumference (lowest third: HR=1.13 [1.10, 1.16], $p=1.6 \times 10^{-10}$; middle third: HR=1.12 [1.09, 1.15], $p=9.5 \times 10^{-23}$; highest third HR=1.07 [1.04, 1.09], $p=9.0 \times 10^{-9}$). There was a similar but non-statistically significant trend for BMI ($p_{\text{interaction}}=0.07$), with a tendency toward stronger associations in leaner compared to obese individuals (Figure 3).

Discussion

While rare monogenic examples of insulin resistance highlight the causal role of inadequate subcutaneous adipose tissue in the aetiology of cardiometabolic disease, the causal role of impaired adipose expandability and ectopic lipid accumulation in “common” cardiometabolic disease remains largely unproven. We observe that a genetic score for insulin resistance displays a pattern of association (lower subcutaneous adipose tissue and T2D) similar to that observed in monogenic forms of lipodystrophy, implicating a role for inadequate capacity to store surplus lipids in the aetiology of T2D. Furthermore, we show that these genetic scores are associated with incident T2D even in individuals of normal weight, highlighting the role of impaired adipose expandability in T2D independently of BMI.

Validation of the genetic risk scores

We found that the genetic risk score comprising variants previously associated with fasting insulin was associated with euglycaemic-hyperinsulinaemic clamp-based insulin sensitivity. Furthermore, a genetic score comprising variants previously associated with early insulin secretion was strongly associated with 30-minute insulin and insulinogenic index, but not with insulin sensitivity. These associations validated the utility of these risk scores as specific and sensitive genetic instruments to understand the role of both insulin resistance and beta-cell dysfunction in the aetiology of diabetes and other disease outcomes.

Association of genetic risk scores with other metabolic traits

The insulin resistance score was associated with *lower* BMI, hip circumference, and body fat percentage, and particularly with lower gynoid and leg fat mass (Figure 2): adipose tissue

depots considered protective against the complications of ectopic fat deposition (25). A prevailing hypothesis for the pathogenesis of insulin resistance proposes that the capacity of adipose tissue to expand in the face of sustained positive energy balance is finite and that exceeding this limit results in lipid storage in tissues less well adapted to this need (26). This phenomenon of ectopic lipid accumulation has been strongly associated with insulin resistance in multiple studies and plausible, albeit still largely unproven, explanations exist linking this lipid accumulation to impaired insulin action (lipotoxicity) (27). Lipodystrophic disorders are characterised by a primary lack of adipose tissue and present an extreme example of a mismatch between the need and capacity to store surplus lipids. These extremely rare disorders are associated with particularly severe ectopic fat accumulation, dyslipidaemia, insulin resistance and diabetes. Recent reports suggests novel forms of lipodystrophy which may be more common (28). Here, we report evidence that common genetic variants show associations similar to those observed in rare, monogenic lipodystrophies (Figure 2), and highlight a potential role a mismatch between the need and capacity to store surplus lipids in “common” metabolic disease. Associations with elevated ALT and gamma-GT are indicative of hepatic fat deposition, consistent with ectopic lipid accumulation. While elevated ALT and gamma-GT are associated with fatty liver (29), they can be elevated in response to other forms of liver injury or disease (30) including alcohol consumption, medication or hepatitis. While we could not exclude the possibility that the insulin resistance score was associated with higher ALT and gamma-GT via mechanisms other than fatty liver, associations with ALT and gamma-GT were unchanged after adjustment for self-reported alcohol intake, and other forms of disease sufficiently rare that in this healthy middle-aged population we consider them unlikely to explain our findings.

Associations with incident disease

1 While obesity is a major risk factor for insulin resistance and T2D, there is considerable inter-
2 individual variation in the metabolic response to obesity, with some individuals apparently
3 protected from the typical consequences of obesity (31). It has previously been shown that
4 insulin sensitive obese individuals have lower visceral and hepatic fat content than insulin
5 resistant obese individuals as well as a lower intima-media thickness (32), further implicating
6 ectopic fat deposition as a determinant of the metabolic consequences of obesity. Despite
7 negative confounding by BMI, we saw an association of the insulin resistance score with
8 incident T2D. As the adipose tissue of obese individuals is placed under greater demand for
9 fat storage, we hypothesized that the insulin resistance score would have a larger effect on
10 T2D risk in these individuals than in normal-weight individuals. However, the insulin
11 resistance score was associated with incident T2D even in normal-weight individuals and
12 those with the lowest waist circumference (Figure 3), with similar effect sizes to obese
13 individuals. This suggests that the relationship between adipose expandability and positive
14 energy balance is not subject to a threshold effect, but may result in degrees of ectopic fat
15 accumulation even in people with a “normal” BMI. This is reminiscent of what is observed in
16 South Asian individuals who have been reported to have higher visceral fat and exacerbated
17 metabolic consequences for a given BMI (33). While the role of beta-cell function has been
18 highlighted in the aetiology of T2D among lean individuals (4), our findings also highlight
19 the role of impaired adipose expandability and insulin resistance in T2D in lean individuals.

20
21 Recent analyses have highlighted the causal role of increased adiposity in impaired
22 cardiometabolic health (34), and we now highlight a causal link between insulin resistance
23 and incident disease, completely independent of BMI. The obesity epidemic is heavily
24 implicated in driving the increased incidence of metabolic disease (35,36). However, while
25 there is some suggestion that hyperinsulinaemia can be a cause and consequence of obesity

(37), we observe that genetically predicted insulin resistance and hyperinsulinaemia are associated with lower adiposity (Figure 2). However, as we restricted our genetic score to those variants associated with dyslipidaemia (to improve specificity), we cannot exclude the possibility that primary insulin resistance of another form could cause obesity, or display different associations with metabolic traits or disease. While insulin resistance is strongly associated with obesity and the secular trends in obesity raise concerns about the growing consequences of insulin resistance (35), of the 19 loci recently found to be associated with fasting insulin levels, only one (*FTO*) was mediated entirely by higher BMI, highlighting the role of other pathways in the aetiology of insulin resistance. Furthermore, the association of 10 of the 19 SNPs with dyslipidaemia (indicative of postreceptor-mediated insulin resistance (38)), implicate this as a prevalent form of common insulin resistance.

As our cross-sectional analyses were restricted to individuals without diagnosed diabetes, we considered the possibility that the insulin resistance score association with *lower* BMI and adiposity were as a result of a truncation effect. I.e. participants with both higher BMI and higher genetic predisposition to insulin resistance had a higher risk of T2D and were preferentially excluded from the sample (3). However, we observed the same association of the score with *lower* BMI in the incident cases of T2D in the InterAct study, suggesting that this association is not wholly attributable to truncation effects.

A limitation of our approach is that we cannot ascribe a specific direction to the associations of the score with insulin resistance and adiposity. For example, while these loci were among the top signals in a genome-wide association study of fasting insulin, it is unclear whether they have a primary association with insulin resistance or with adipocyte function. Indeed, a

variant near *IRS1* is included in this list, and while absence of *IRS1* is known to result in insulin resistance through impaired insulin signal transduction (39), *IRS1* also influences adipocyte differentiation (40). Indeed, *IRS1* was previously associated with body fat percentage (6), where the allele associated with higher body fat percentage was associated with a favourable metabolic profile, including lower risk of T2D and cardiovascular disease. Here, we see the same pattern of association for our genetic risk score and thereby highlight a number of genetic variants that may be influential in the ability to store surplus lipids optimally. The association with insulin resistance was apparently paradoxically accompanied by lower body fat percentage and lower BMI. However, these results are paradoxical only when considered in the context of the observational epidemiological association between higher adiposity and insulin resistance. Our results, in combination with observations from individuals with monogenic lipodystrophy, suggest that these loci may have primary effects on subcutaneous adipocyte function, which then results in insulin resistance via ectopic lipid deposition. While we perform analyses using a combined genetic score, our findings implicate each of these loci in the aetiology of insulin resistance and body fat distribution. This conclusion is supported by findings in an accompanying article (Yaghootkar et al, Diabetes, submitted), which independently identify the same variants in our score as being associated with a “monogenic lipodystrophy-like” phenotype using a hypothesis-free clustering approach. The inclusions of *PPARG* and *IRS1* in the insulin resistance score further highlight the likely role of adipocyte function in their associations with insulin resistance. However, even after removing *PPARG* and *IRS1* variants from the insulin resistance score, we observed consistent associations with body fat distribution. Furthermore, *LYPLAL1*, *GRB14* and *RSPO3* have been associated with waist-hip ratio at genome-wide levels of significance (41).

1 *Conclusions*

2 Genetic scores for insulin resistance and secretion based on common variants are valid tools
3 to study the role of these features in a range of disease processes. In particular, while insulin
4 resistance as a cause of T2D is largely considered to be a consequence of obesity, we
5 highlight the role of polygenic insulin resistance in the development of T2D independent of
6 body size. Furthermore, the association of these variants with lower subcutaneous fat mass
7 and suggestion of ectopic fat deposition highlight the role of impaired adipose expandability
8 and body fat distribution in T2D even among lean individuals.

9

Author contributions

R.A.S, D.B.S, C.L, N.J.W wrote the first draft of the manuscript. R.A.S T.F, D.P, A.B, S.J.S, performed study-level analyses. R.A.S, T.F, D.P, A.B, S.J.S, L.A, B.B, A.B, I.B, H.B, F.C-C, F.C, J.D, G.F, E.F, N.G.F, P.W.F, D.G, V.G, S.G, L.G, R.K, T.J.K, T.K, L.A.L, P.N, K.O, D.P, S.P, J.R.Q, O.R, N.R, C.S, N.S, M-J.S, A.S, N.S, I.S, A.M.W.S, A.T, R.T, D.v.d.A, H.Y, M.I.M, R.K.S, E.R, M.W, E.I, T.M.F, D.B.S, C.L, N.J.W, researched/provided data, reviewed and revised/approved the manuscript. R.A.S is the guarantor of this work and, as such, had full access to all the data in the study and takes responsibility for the integrity of the data and the accuracy of the data analysis.

Acknowledgements

The MRC-Ely Study was funded by the Medical Research Council (MC_U106179471) and Diabetes UK. We are grateful to all the volunteers, and to the staff of St. Mary's Street Surgery, Ely and the study team. The Fenland Study is funded by the Medical Research Council (MC_U106179471) and Wellcome Trust. We are grateful to all the volunteers for their time and help, and to the General Practitioners and practice staff for assistance with recruitment. We thank the Fenland Study Investigators, Fenland Study Co-ordination team and the Epidemiology Field, Data and Laboratory teams. DBS and RKS are funded by the Wellcome Trust, the U.K. NIHR Cambridge Biomedical Research Centre and the MRC Centre for Obesity and Related Metabolic Disease. Genotyping in ULSAM was performed by the SNP&SEQ Technology Platform in Uppsala (www.genotyping.se), which is supported by Uppsala University, Uppsala University Hospital, Science for Life Laboratory - Uppsala and the Swedish Research Council (Contracts 80576801 and 70374401). The RISC Study was supported by European Union grant QLG1-CT-2001-01252 and AstraZeneca. The RISC Study Project Management Board: B Balkau, F Bonnet, SW Coppack, JM Dekker, E Ferrannini, A Golay, A Mari, A Natali, J Petrie, M Walker. We thank all EPIC participants and staff for their contribution to the study. We thank the lab team at the MRC Epidemiology Unit for sample management and Nicola Kerrison of the MRC Epidemiology Unit for data management. Funding for the InterAct project was provided by the EU FP6 programme (grant number LSHM_CT_2006_037197). In addition, InterAct investigators acknowledge funding from the following agencies: PWF: Swedish Research Council, Novo Nordisk, Swedish Diabetes Association, Swedish Heart-Lung Foundation; LCG: Swedish Research

1 Council; NS: Health Research Fund (FIS) of the Spanish Ministry of Health; Murcia
2 Regional Government (Nº 6236); LA: We thank the participants of the Spanish EPIC cohort
3 for their contribution to the study as well as to the team of trained nurses who participated in
4 the recruitment; EJD: Funding acknowledgement (the Spanish Ministry of Health – ISCII
5 RETICC RD06/0020); RK: German Cancer Aid, German Ministry of Research (BMBF);
6 TJK: Cancer Research UK; PMN: Swedish Research Council; KO: Danish Cancer Society;
7 SP: Compagnia di San Paolo; JRQ: Asturias Regional Government; OR: The Västerboten
8 County Council; AMWS and DLvdA: Dutch Ministry of Public Health, Welfare and Sports
9 (VWS), Netherlands Cancer Registry (NKR), LK Research Funds, Dutch Prevention Funds,
10 Dutch ZON (Zorg Onderzoek Nederland), World Cancer Research Fund (WCRF), Statistics
11 Netherlands; RT: AIRE-ONLUS Ragusa, AVIS-Ragusa, Sicilian Regional Government; IS:
12 Verification of diabetes cases was additionally funded by NL Agency grant IGE05012 and an
13 Incentive Grant from the Board of the UMC Utrecht; IB: Wellcome Trust grant 098051 and
14 United Kingdom NIHR Cambridge Biomedical Research Centre; MIM: InterAct, Wellcome
15 Trust (083270/Z/07/Z), MRC (G0601261); ER: Imperial College Biomedical Research.
16 None of the authors declared a conflict of interest. Inês Barroso and her spouse own stock in
17 the companies GlaxoSmithKline (GSK) and Incyte (INCY).

References

1. Kahn SE. The relative contributions of insulin resistance and beta-cell dysfunction to the pathophysiology of Type 2 diabetes. *Diabetologia*. 2003 Jan;46(1):3–19.
2. Langenberg C, Sharp SJ, Schulze MB, Rolandsson O, Overvad K, Forouhi NG, et al. Long-term risk of incident type 2 diabetes and measures of overall and regional obesity: the EPIC-InterAct case-cohort study. *PLoS medicine*. Public Library of Science; 2012 Jan 5;9(6):e1001230.
3. Dimas AS, Lagou V, Barker A, Knowles JW, Mägi R, Hivert M-F, et al. Impact of type 2 diabetes susceptibility variants on quantitative glycemic traits reveals mechanistic heterogeneity. *Diabetes*. 2013 Dec 2;3–75.
4. Perry JRB, Voight BF, Yengo L, Amin N, Dupuis J, Ganser M, et al. Stratifying type 2 diabetes cases by BMI identifies genetic risk variants in LAMA1 and enrichment for risk variants in lean compared to obese cases. *PLoS genetics*. 2012 May;8(5):e1002741.
5. Semple RK, Savage DB, Cochran EK, Gorden P, O’Rahilly S. Genetic syndromes of severe insulin resistance. *Endocrine reviews*. 2011 Aug;32(4):498–514.
6. Kilpeläinen TO, Zillikens MC, Stančáková A, Finucane FM, Ried JS, Langenberg C, et al. Genetic variation near IRS1 associates with reduced adiposity and an impaired metabolic profile. *Nature genetics*. Nature Publishing Group; 2011 Aug;43(8):753–60.
7. Manning AK, Hivert M-F, Scott R a, Grimsby JL, Bouatia-Naji N, Chen H, et al. A genome-wide approach accounting for body mass index identifies genetic variants influencing fasting glycemic traits and insulin resistance. *Nature genetics*. 2012 Jun;44(6):659–69.
8. Scott R a, Lagou V, Welch RP, Wheeler E, Montasser ME, Luan J, et al. Large-scale association analyses identify new loci influencing glycemic traits and provide insight into the underlying biological pathways. *Nature genetics*. 2012 Sep;44(9):991–1005.
9. Ingelsson E, Langenberg C, Hivert M, Prokopenko I, Ma R, Sharp S, et al. and Insulin Metabolism in Humans. 2010;59(May).
10. Forouhi NG, Luan J, Hennings S, Wareham NJ. Incidence of Type 2 diabetes in England and its association with baseline impaired fasting glucose: the Ely study 1990–2000. *Diabetic medicine*: a journal of the British Diabetic Association. 2007 Feb;24(2):200–7.
11. Rolfe EDL, Loos RJF, Druet C, Stolk RP, Ekelund U, Griffin SJ, et al. Association between birth weight and visceral fat in adults. *The American journal of clinical nutrition*. 2010 Aug;92(2):347–52.
12. Abecasis GR, Auton A, Brooks LD, DePristo M a, Durbin RM, Handsaker RE, et al. An integrated map of genetic variation from 1,092 human genomes. *Nature*. 2012 Nov 1;491(7422):56–65.
13. Hills SA, Balkau B, Coppack SW, Dekker JM, Mari A, Natali A, et al. The EGIR-RISC STUDY (The European group for the study of insulin resistance: relationship between insulin sensitivity and cardiovascular disease risk): I. Methodology and objectives. *Diabetologia*. 2004 Mar;47(3):566–70.

- 1 14. Zethelius B, Byberg L, Hales CN, Lithell H, Berne C. Proinsulin and acute insulin response
2 independently predict Type 2 diabetes mellitus in men--report from 27 years of follow-up
3 study. *Diabetologia*. 2003 Jan;46(1):20–6.
- 4 15. Langenberg C, Sharp S, Forouhi NG, Franks PW, Schulze MB, Kerrison N, et al. Design and
5 cohort description of the InterAct Project: an examination of the interaction of genetic and
6 lifestyle factors on the incidence of type 2 diabetes in the EPIC Study. *Diabetologia*. 2011
7 Sep;54(9):2272–82.
- 8 16. Teslovich TM, Musunuru K, Smith A V, Edmondson AC, Stylianou IM, Koseki M, et al.
9 Biological, clinical and population relevance of 95 loci for blood lipids. *Nature*. Nature
10 Publishing Group; 2010 Aug 5;466(7307):707–13.
- 11 17. Lyssenko V, Lupi R, Marchetti P, Guerra S Del, Orho-melander M, Almgren P, et al.
12 Mechanisms by which common variants in the TCF7L2 gene increase risk of type 2 diabetes.
13 2007;117(8):2155–63.
- 14 18. Voight BF, Scott LJ, Steinthorsdottir V, Morris AP, Dina C, Welch RP, et al. Twelve type 2
15 diabetes susceptibility loci identified through large-scale association analysis. *Nature genetics*.
16 2010 Jul;42(7):579–89.
- 17 19. Strawbridge RJ, Dupuis J, Prokopenko I, Barker A, Ahlqvist E, Rybin D, et al. Genome-wide
18 association identifies nine common variants associated with fasting proinsulin levels and
19 provides new insights into the pathophysiology of type 2 diabetes. *Diabetes*. 2011
20 Oct;60(10):2624–34.
- 21 20. Saxena R, Hivert M-F, Langenberg C, Tanaka T, Pankow JS, Vollenweider P, et al. Genetic
22 variation in GIPR influences the glucose and insulin responses to an oral glucose challenge.
23 *Nature genetics*. 2010 Feb;42(2):142–8.
- 24 21. Dupuis J, Langenberg C, Prokopenko I, Saxena R, Soranzo N, Jackson AU, et al. New genetic
25 loci implicated in fasting glucose homeostasis and their impact on type 2 diabetes risk. *Nature*
26 *genetics*. 2010 Feb;42(2):105–16.
- 27 22. DeFronzo RA, Tobin JD, Andres R. Glucose clamp technique: a method for quantifying
28 insulin secretion and resistance. *The American journal of physiology*. 1979 Sep;237(3):E214–
29 23.
- 30 23. Matsuda M, DeFronzo RA. Insulin sensitivity indices obtained from oral glucose tolerance
31 testing: comparison with the euglycemic insulin clamp. *Diabetes care*. 1999 Sep;22(9):1462–
32 70.
- 33 24. Seltzer HS, Allen EW, Herron a L, Brennan MT. Insulin secretion in response to glycemic
34 stimulus: relation of delayed initial release to carbohydrate intolerance in mild diabetes
35 mellitus. *The Journal of clinical investigation*. 1967 Mar;46(3):323–35.
- 36 25. Manolopoulos KN, Karpe F, Frayn KN. Gluteofemoral body fat as a determinant of metabolic
37 health. *International journal of obesity (2005)*. Nature Publishing Group; 2010 Jun;34(6):949–
38 59.
- 39 26. Virtue S, Vidal-Puig A. Adipose tissue expandability, lipotoxicity and the Metabolic
40 Syndrome--an allostatic perspective. *Biochimica et biophysica acta*. Elsevier B.V.; 2010
41 Mar;1801(3):338–49.

- 1 27. Savage DB, Petersen KF, Shulman GI. Disordered Lipid Metabolism and the Pathogenesis of
2 Insulin Resistance. 2007;(32):507–20.
- 3 28. Strickland LR, Guo F, Lok K, Garvey WT. Type 2 diabetes with partial lipodystrophy of the
4 limbs: a new lipodystrophy phenotype. Diabetes care. 2013 Aug;36(8):2247–53.
- 5 29. Angulo P. Nonalcoholic fatty liver disease. The New England journal of medicine. 2002 Apr
6 18;346(16):1221–31.
- 7 30. Pratt DS, Kaplan MM. Evaluation of abnormal liver-enzyme results in asymptomatic patients.
8 The New England journal of medicine. 2000 Apr 27;342(17):1266–71.
- 9 31. Sims E a. Are there persons who are obese, but metabolically healthy? Metabolism: clinical
10 and experimental. 2001 Dec;50(12):1499–504.
- 11 32. Stefan N, Kantartzis K, Machann J, Schick F, Thamer C, Rittig K, et al. Identification and
12 characterization of metabolically benign obesity in humans. Archives of internal medicine.
13 2008 Aug 11;168(15):1609–16.
- 14 33. Sniderman AD, Bhopal R, Prabhakaran D, Sarrafzadegan N, Tchernof A. Why might South
15 Asians be so susceptible to central obesity and its atherogenic consequences? The adipose
16 tissue overflow hypothesis. International journal of epidemiology. 2007 Feb;36(1):220–5.
- 17 34. Fall T, Hägg S, Mägi R, Ploner A, Fischer K, Horikoshi M, et al. The role of adiposity in
18 cardiometabolic traits: a mendelian randomization analysis. PLoS medicine. 2013
19 Jun;10(6):e1001474.
- 20 35. Kahn SE, Hull RL, Utzschneider KM. Mechanisms linking obesity to insulin resistance and
21 type 2 diabetes. Nature. 2006 Dec 14;444(7121):840–6.
- 22 36. Li S, Zhao JH, Luan J, Langenberg C, Luben RN, Khaw KT, et al. Genetic predisposition to
23 obesity leads to increased risk of type 2 diabetes. Diabetologia. 2011 Apr;54(4):776–82.
- 24 37. Mehran AE, Templeman NM, Brigidi GS, Lim GE, Chu K-Y, Hu X, et al. Hyperinsulinemia
25 drives diet-induced obesity independently of brain insulin production. Cell metabolism.
26 Elsevier Inc.; 2012 Dec 5;16(6):723–37.
- 27 38. Semple RK, Sleight A, Murgatroyd PR, Adams CA, Bluck L, Jackson S, et al. Postreceptor
28 insulin resistance contributes to human dyslipidemia and hepatic steatosis. 2009;119(2).
- 29 39. Tamemoto H, Kadowaki T, Tobe K, Yagi T, Sakura H, Hayakawa T, et al. Insulin resistance
30 and growth retardation in mice lacking insulin receptor substrate-1. Nature. 1994 Nov
31 10;372(6502):182–6.
- 32 40. Fasshauer M, Klein J, Kristina M, Ueki K, Benito M, Ronald C, et al. Essential Role of Insulin
33 Receptor Substrate 1 in Differentiation of Brown Adipocytes Essential Role of Insulin
34 Receptor Substrate 1 in Differentiation of Brown Adipocytes. 2001;
- 35 41. Heid IM, Jackson AU, Randall JC, Winkler TW, Qi L, Steinthorsdottir V, et al. Meta-analysis
36 identifies 13 new loci associated with waist-hip ratio and reveals sexual dimorphism in the
37 genetic basis of fat distribution. Nature genetics. 2010 Nov;42(11):949–60.

38

Figure legends

Figure 1a-b: Association of the insulin resistance and secretion risk scores with a range of standardised outcomes. Effect sizes are expressed per-risk allele. All models were adjusted for age, sex and BMI, other than anthropometric traits, which were adjusted only for age and sex.

Figure 2: Association of the insulin resistance score on standardised anthropometric traits in the Fenland study. Effect sizes are expressed per-risk allele. All models were adjusted for age and sex.

Figure 3: Association of the risk scores with type 2 diabetes in the EPIC-InterAct study. Associations are shown overall and by strata of BMI and waist circumference at baseline. BMI strata were defined by WHO BMI cutoffs and waist circumference strata were defined by sex-specific tertiles (low: M<94cm, F<78.5cm; med: M>94-103cm, F>78.5-90cm; high: M>103cm, F>90cm).

Supplementary Figure 1: Regional compartment definition in the Fenland DXA data. The trunk region extends from the chin to the top of the pelvis. The leg regions are defined by a cut across the femoral neck, not touching the pelvis. The arm regions are defined by a cut placed as close to the body as possible. The android region is a quadrilateral box, where the lower boundary is the pelvis, the lateral boundaries are the arm cuts and the upper boundary is above the pelvis cut by 20% of the distance between the pelvis and neck cuts. The gynoid region is another quadrilateral box where the lateral boundaries are the arm cuts. The upper boundary is below the pelvis cut by 1.5 x the height of the android region. The Lower boundary is below the upper boundary by 2 x the height of the android region.

Supplementary Figure 2: Histograms of genetic risk scores from each study for a) insulin secretion and b) insulin resistance scores.

1 **Supplementary Tables**

2 (see attached excel file: **Scott_Common_genetic_variants_SuppTable_041213.xls**)

3 **Supplementary Table 1:** SNPs included in the genetic risk scores, with the study in which
4 they were identified or implicated in insulin secretion or resistance. The risk allele for each of
5 these SNPs is also shown. Where the lead SNP was not available, the proxy used is listed for
6 each study. Where a suitable proxy was not available, the SNP is marked “x”.

1 **Tables**

2

3 **Table 1:** Study descriptives of each of the five participating studies, along with details of the genetic risk scores. M/I in RISC is reported in
4 (micromol/kgFFM/min/nmol/l)/1000, while M/I in ULSAM is reported as mg/kg bw/min/mU/l*100.

5

	Study					
	MRC-Ely	RISC	ULSAM	Fenland (Metabochip)	Fenland (Genome-wide)	InterAct subcohort
N (M/F)	1374 (629/745)	1031(453/57 8)	907 (907/0)	2978 (1403/1575)	1357 (597/760)	16,154 (6,111/10043)
Age (years)	60.9 (9.2)	43.96(8.37)	70.98 (0.59) 175.12	47.0 (7.1)	45.0 (7.3)	52.4 (9.2)
Height (cm)	167.5 (8.9)	170.91 (9.32)	(5.95)	170.6 (9.5)	169.8 (9.3)	166.2 (9.3)
BMI (kg/m ²)	27.03 (4.68)	25.47 (4.01)	25.97 (3.22)	26.7 (4.9)	27.1 (4.9)	26.0 (4.2)
Waist circumference (cm)	92.57 (13.2)	86.46 (12.70)	93.85 (9.12)	90.5 (13.4)	92.2 (13.6)	86.4 (12.7)
M/I		0.14(0.07)	5.43(2.42)			
Matsuda Index	7.09 (4.60)	6.42(1.86)	4.30(2.66)			
Insulinogenic index	115.70					
(pmol_{insulin}/mmol_{glucose})	(108.0)	30.42 (19.86)				
Fasting glucose (mmol/L)	4.97 (0.54)	5.05(0.56)	5.34(0.53) 72.41(40.70	4.8 (0.71)	4.89 (0.61)	
Fasting insulin (pmol/L)	55.84 (34.64)	34.4(18.68))	45.1 (11.2)	46.4 (32.9)	

6

Figure 1a: Insulin Resistance Score Validation

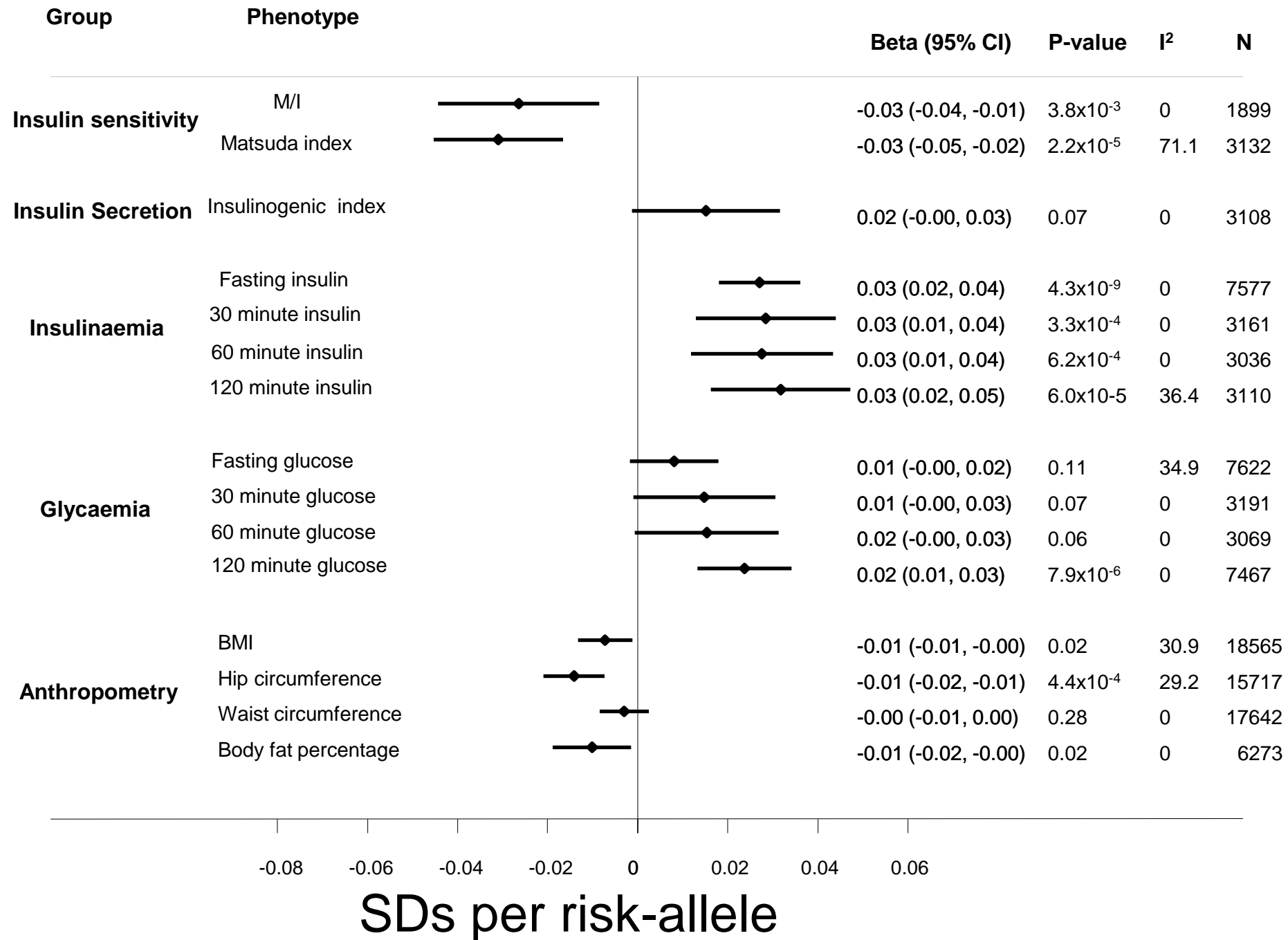
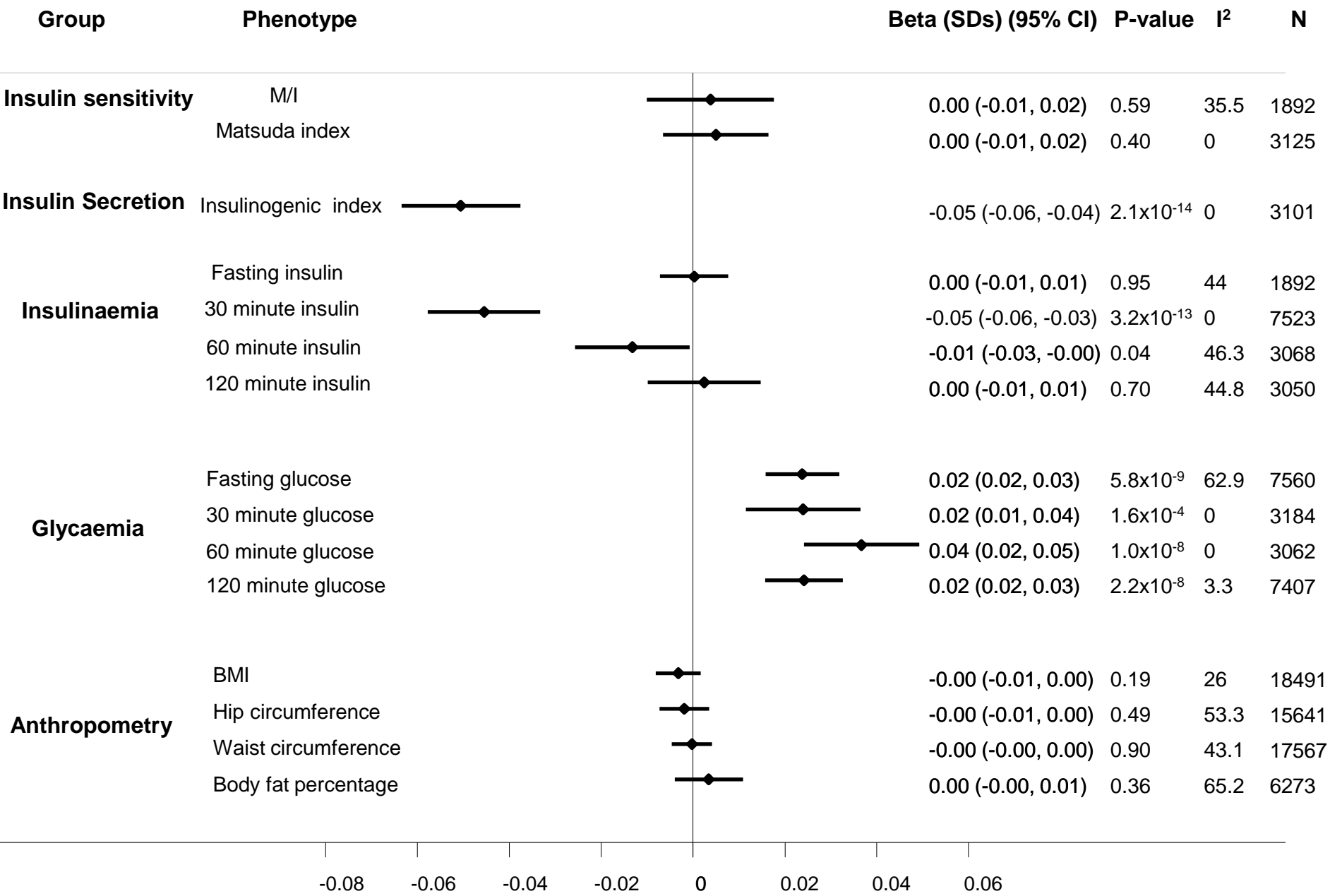


Figure 1b: Insulin Secretion Score Validation



SDs per risk-allele

Figure 2: Insulin resistance score follow up

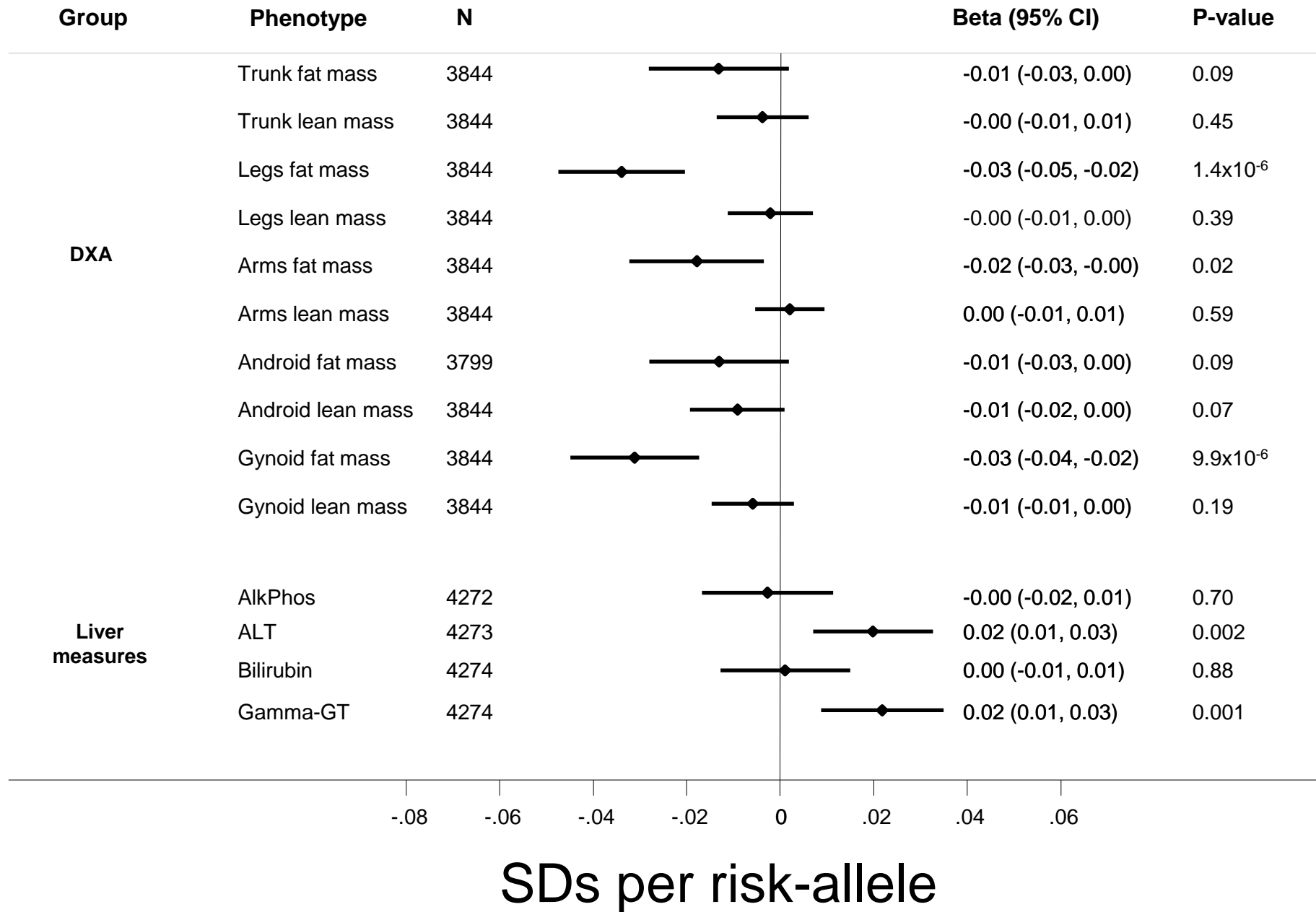
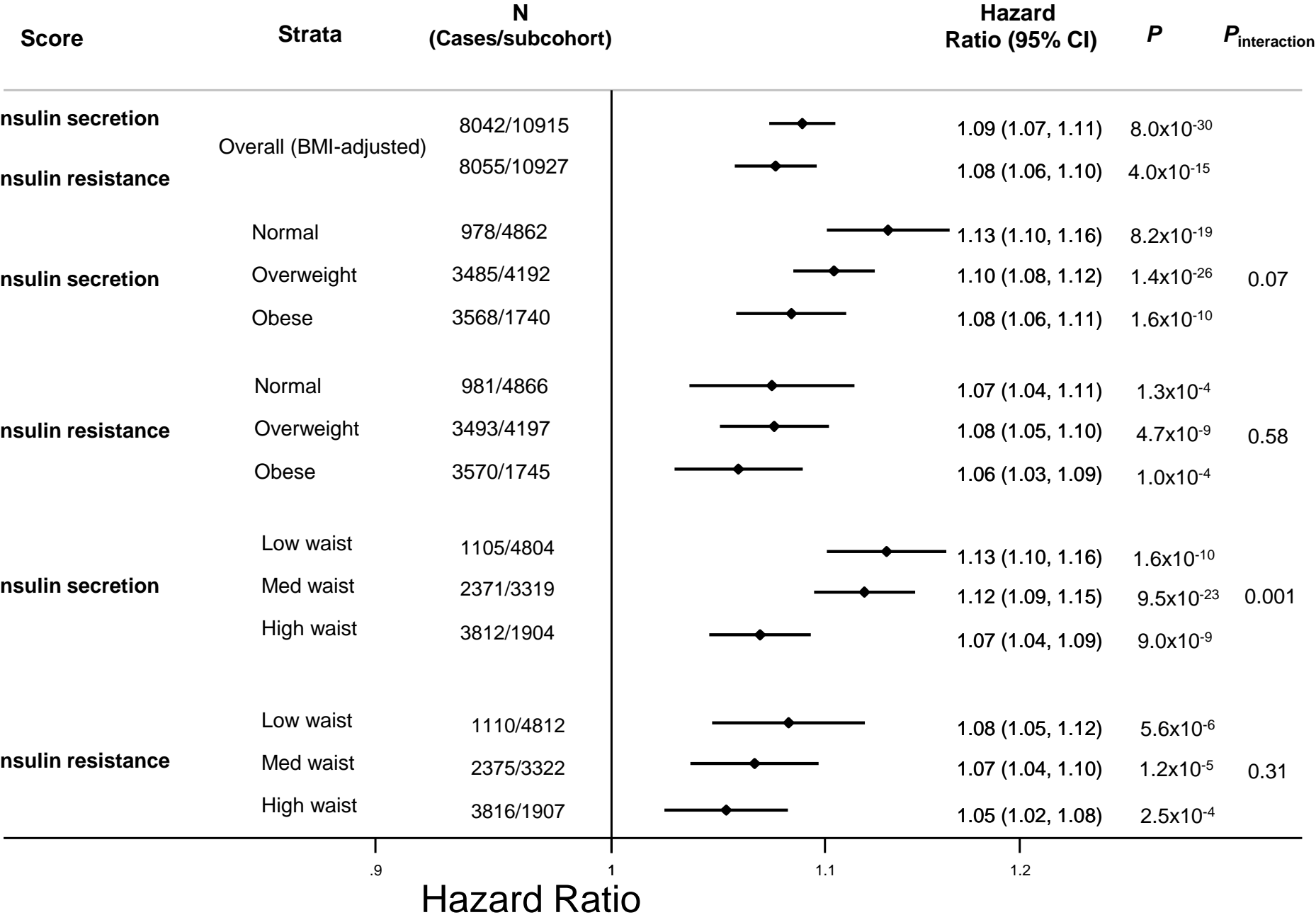


Figure 3: T2D associations: overall and by strata



Score	SNP	Gene	Reference (PMID)
Insulin secretion	rs10946398	<i>CDKAL1</i>	17463249; 19056611; 17463246; 17460697
Insulin secretion	rs10830963	<i>MTNR1B</i>	20185807; 19833888; 19455304
Insulin secretion	rs7903146	<i>TCF7L2</i>	20185807; 19502414; 17671651; 17416797
Insulin secretion	rs5015480	<i>HHEX</i>	19502414; 19225753; 17827400
Insulin secretion	rs4502156	<i>VPS13C</i>	21873549
Insulin secretion	rs11603334	<i>CENTD2</i>	21873549
Insulin secretion	rs13266634	<i>SLC30A8</i>	20185807; 19502414; 18324385
Insulin secretion	rs10811661	<i>CDKN2A/B</i>	19502414; 17827400
Insulin secretion	rs5219	<i>KCNJ11</i>	19502414
Insulin secretion	rs7957197	<i>HNF1A</i>	9851800; 12883275; 12773136
Insulin secretion	rs174550	<i>FADS1</i>	20419449; 20185807
Insulin secretion	rs1800574	<i>HNF1A</i>	9851800
Insulin secretion	rs12686676	<i>NR4A3</i>	19682370
Insulin secretion	rs2191349	<i>DGKB</i>	21887289; 20419449; 20185807
Insulin secretion	rs11605924	<i>CRY2</i>	20419449
Insulin secretion	rs4607517	<i>GCK</i>	20185807
Insulin secretion	rs2237895	<i>KCNQ1</i>	19584308
Insulin secretion	rs11672660	<i>GIPR</i>	20185807
Insulin secretion	rs560887	<i>G6PC2</i>	20185807; 20826583
Insulin secretion	rs12779790	<i>CDC123</i>	19833888; 18714373; 18567820
Insulin secretion	rs950994	<i>TFB1M</i>	21195351
Insulin resistance	rs4846565	<i>LYPLAL1</i>	22581228; 22885924
Insulin resistance	rs10195252	<i>GRB14</i>	22581228; 22885924
Insulin resistance	rs2943645	<i>IRS1</i>	22581228; 22885924
Insulin resistance	rs17036328	<i>PPARG</i>	22581228; 22885924
Insulin resistance	rs3822072	<i>FAM13A1</i>	22885924
Insulin resistance	rs6822892	<i>PDGFC</i>	22581228; 22885924
Insulin resistance	rs4865796	<i>ARL15</i>	22885924
Insulin resistance	rs459193	<i>ANKRD55/MAP3K1</i>	22885924
Insulin resistance	rs2745353	<i>RSPO3</i>	22885924
Insulin resistance	rs731839	<i>PEPD</i>	22885924

Risk allele	MRC-Ely	Study RISC	ULSAM	Fenland (Metabochip)
C	rs9460546			rs9460546
G				
T				
C	rs1111875		rs10882102	rs1111875
T				
G				
C	rs3802177			rs3802177
T				
T				
T	rs7965349			rs7965349
T				
T	rs77536694		rs77536694	rs77536694
G	x		x	x
T				
C	rs12794698		rs12794698	rs12794698
A	rs6975024			rs6975024
C	x			x
T				
T			rs573225	
G	x		x	x
A	x		x	x
G				
T				
T				
T				
A				
A				
A				
G				
T				
G				

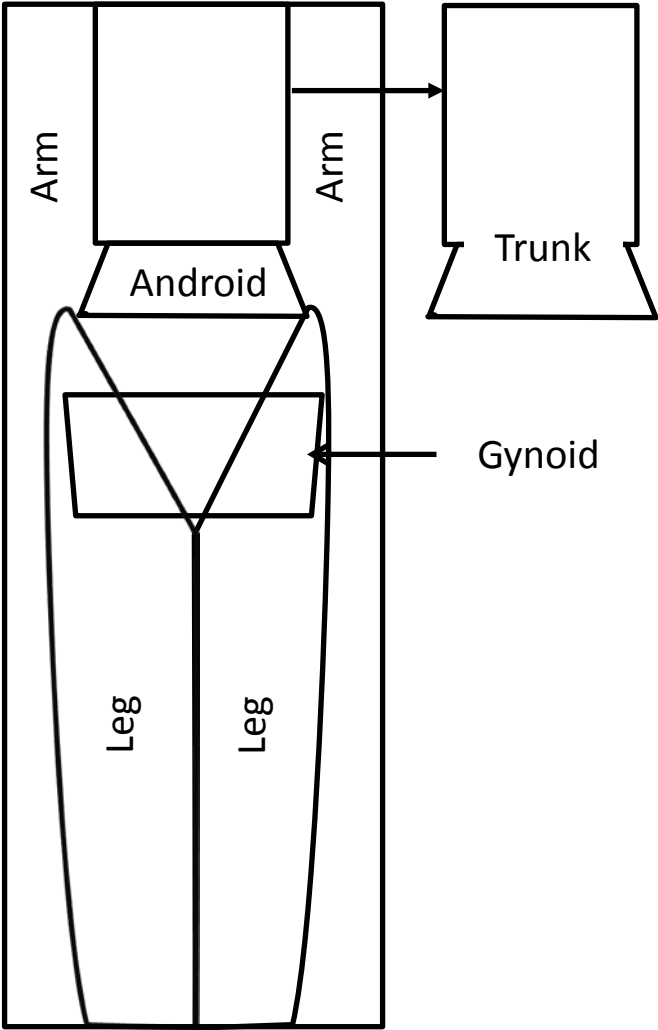
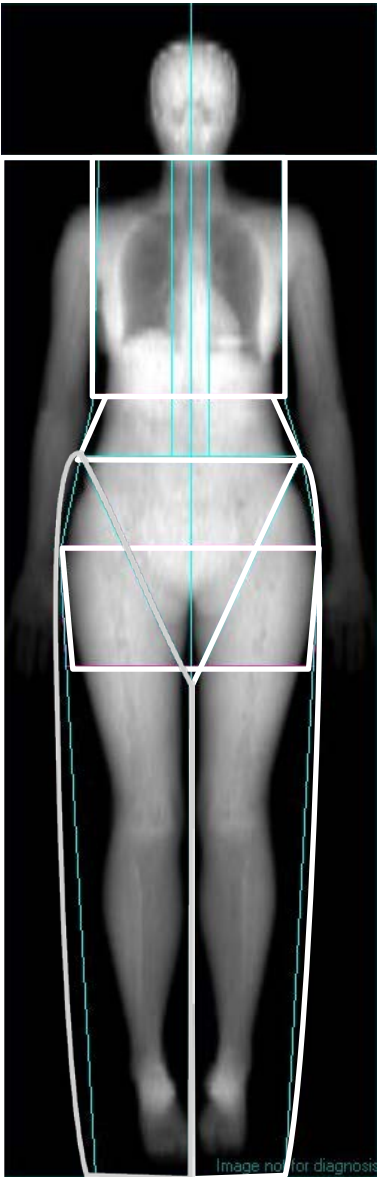
Fenland (Genome-wide) InterAct

X
X

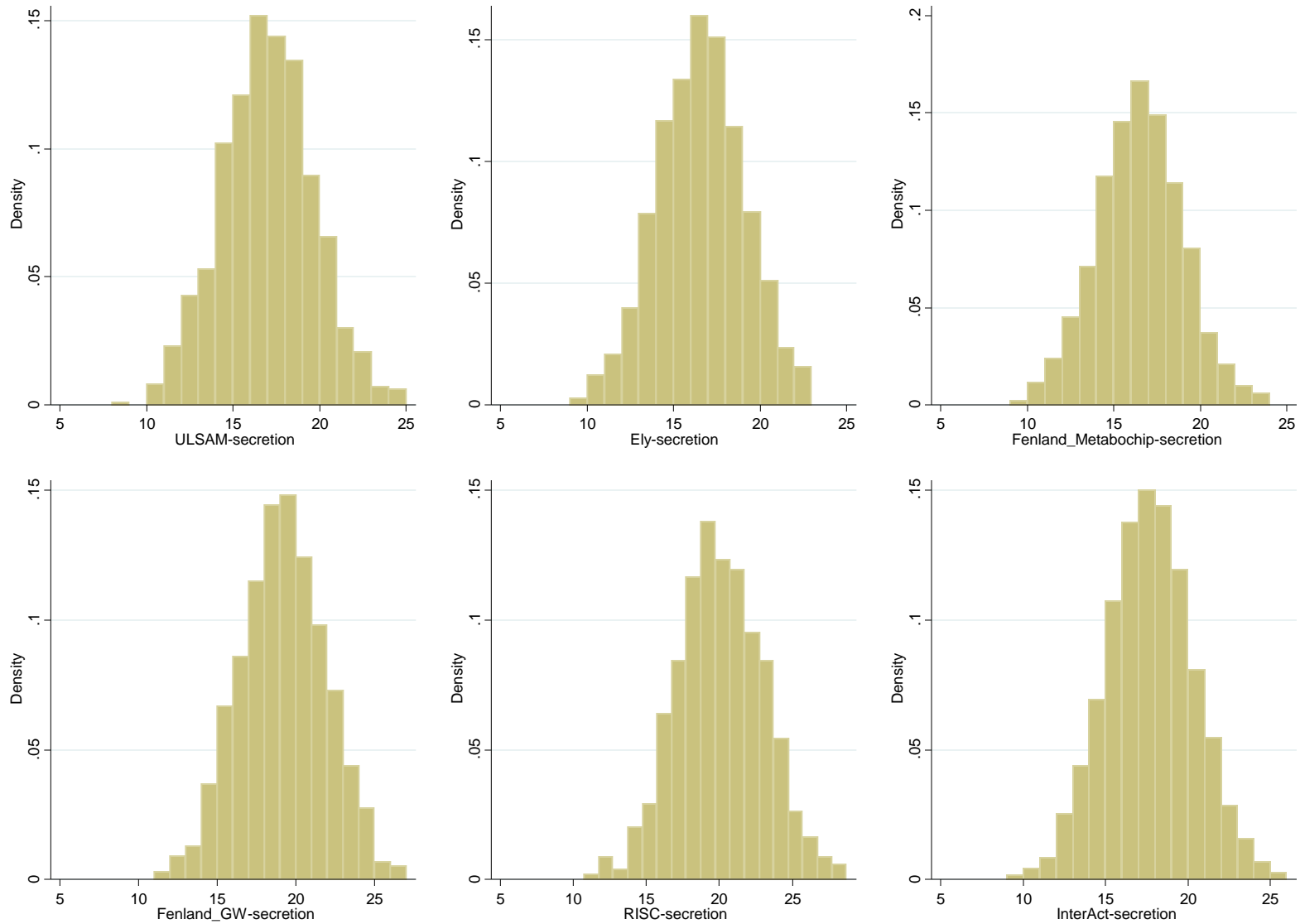
X

X

Online Supplementary figure 1



Online Supplementary figure 2a



Online Supplementary figure 2b

