

Association of Genetic Variants Related to Gluteofemoral vs Abdominal Fat Distribution With Type 2 Diabetes, Coronary Disease, and Cardiovascular Risk Factors

Luca A. Lotta, MD, PhD; Laura B. L. Wittemans, MSc; Verena Zuber, PhD; Isobel D. Stewart, PhD; Stephen J. Sharp, MSc; Jian'an Luan, PhD; Felix R. Day, PhD; Chen Li, MSc; Nicholas Bowker, MSc; Lina Cai, MSc; Emanuela De Lucia Rolfe, PhD; Kay-Tee Khaw, MB, ChB, MSc; John R. B. Perry, PhD; Stephen O'Rahilly, MD; Robert A. Scott, PhD; David B. Savage, MD; Stephen Burgess, PhD; Nicholas J. Wareham, MBBS, PhD; Claudia Langenberg, MD, PhD

 Supplemental content

IMPORTANCE Body fat distribution, usually measured using waist-to-hip ratio (WHR), is an important contributor to cardiometabolic disease independent of body mass index (BMI). Whether mechanisms that increase WHR via lower gluteofemoral (hip) or via higher abdominal (waist) fat distribution affect cardiometabolic risk is unknown.

OBJECTIVE To identify genetic variants associated with higher WHR specifically via lower gluteofemoral or higher abdominal fat distribution and estimate their association with cardiometabolic risk.

DESIGN, SETTING, AND PARTICIPANTS Genome-wide association studies (GWAS) for WHR combined data from the UK Biobank cohort and summary statistics from previous GWAS (data collection: 2006-2018). Specific polygenic scores for higher WHR via lower gluteofemoral or via higher abdominal fat distribution were derived using WHR-associated genetic variants showing specific association with hip or waist circumference. Associations of polygenic scores with outcomes were estimated in 3 population-based cohorts, a case-cohort study, and summary statistics from 6 GWAS (data collection: 1991-2018).

EXPOSURES More than 2.4 million common genetic variants (GWAS); polygenic scores for higher WHR (follow-up analyses).

MAIN OUTCOMES AND MEASURES BMI-adjusted WHR and unadjusted WHR (GWAS); compartmental fat mass measured by dual-energy x-ray absorptiometry, systolic and diastolic blood pressure, low-density lipoprotein cholesterol, triglycerides, fasting glucose, fasting insulin, type 2 diabetes, and coronary disease risk (follow-up analyses).

RESULTS Among 452 302 UK Biobank participants of European ancestry, the mean (SD) age was 57 (8) years and the mean (SD) WHR was 0.87 (0.09). In genome-wide analyses, 202 independent genetic variants were associated with higher BMI-adjusted WHR ($n = 660\ 648$) and unadjusted WHR ($n = 663\ 598$). In dual-energy x-ray absorptiometry analyses ($n = 18\ 330$), the hip- and waist-specific polygenic scores for higher WHR were specifically associated with lower gluteofemoral and higher abdominal fat, respectively. In follow-up analyses ($n = 636\ 607$), both polygenic scores were associated with higher blood pressure and triglyceride levels and higher risk of diabetes (waist-specific score: odds ratio [OR], 1.57 [95% CI, 1.34-1.83], absolute risk increase per 1000 participant-years [ARI], 4.4 [95% CI, 2.7-6.5], $P < .001$; hip-specific score: OR, 2.54 [95% CI, 2.17-2.96], ARI, 12.0 [95% CI, 9.1-15.3], $P < .001$) and coronary disease (waist-specific score: OR, 1.60 [95% CI, 1.39-1.84], ARI, 2.3 [95% CI, 1.5-3.3], $P < .001$; hip-specific score: OR, 1.76 [95% CI, 1.53-2.02], ARI, 3.0 [95% CI, 2.1-4.0], $P < .001$), per 1-SD increase in BMI-adjusted WHR.

CONCLUSIONS AND RELEVANCE Distinct genetic mechanisms may be linked to gluteofemoral and abdominal fat distribution that are the basis for the calculation of the WHR. These findings may improve risk assessment and treatment of diabetes and coronary disease.

JAMA. 2018;320(24):2553-2563. doi:10.1001/jama.2018.19329

Author Affiliations: MRC Epidemiology Unit, University of Cambridge, Cambridge, United Kingdom (Lotta, Wittemans, Stewart, Sharp, Luan, Day, Li, Bowker, Cai, De Lucia Rolfe, Perry, Scott, Wareham, Langenberg); MRC Biostatistics Unit, University of Cambridge, Cambridge, United Kingdom (Zuber, Burgess); Department of Public Health and Primary Care, University of Cambridge, Cambridge, United Kingdom (Khaw, Burgess); Metabolic Research Laboratories, Institute of Metabolic Science, University of Cambridge, Cambridge, United Kingdom (O'Rahilly, Savage).

Corresponding Authors: Claudia Langenberg, MD, PhD (claudia.langenberg@mrc-epid.cam.ac.uk), and Luca A. Lotta, MD, PhD (luca.lotta@mrc-epid.cam.ac.uk), MRC Epidemiology Unit, University of Cambridge, Cambridge CB20QQ, United Kingdom.

The distribution of body fat is associated with the propensity of overweight individuals to manifest insulin resistance and its associated metabolic and cardiovascular complications.¹⁻⁵ The waist-to-hip ratio (WHR) is a widely used, convenient, and robustly validated indicator of fat distribution and is linked to the risk of type 2 diabetes and coronary disease independently of body mass index (BMI, calculated as weight in kilograms divided by height in meters squared).¹⁻⁵ This observation has been used to infer that accumulation of fat in the abdominal cavity is an independent causal contributor to cardiometabolic disease. While many studies support this assertion and plausible mechanisms have been proposed, WHR can also be increased by a reduction in its denominator, the hip circumference. Evidence from several different forms of partial lipodystrophy^{6,7} and functional studies of peripheral adipose storage compartments⁸⁻¹⁰ suggests that a primary inability to expand gluteofemoral or hip fat can also underpin subsequent cardiometabolic disease risk. Emerging evidence from the analysis of common genetic variants associated with greater insulin resistance but lower levels of hip fat suggests that similar mechanisms may also be relevant to the general population.¹¹⁻¹⁴

In this study, large-scale human genetic data were used to investigate whether genetic variants related to body fat distribution via lower levels of gluteofemoral (hip) fat or via higher levels of abdominal (waist) fat are associated with type 2 diabetes or coronary disease risk.

Methods

Study Design

A multistage approach was adopted (Table 1). In stage 1, genome-wide association studies (GWAS) of WHR with and without adjustment for BMI were performed to identify genetic variants associated with fat distribution. Stage 1 included data from participants of European ancestry in the UK Biobank study and summary statistics from previously published GWAS of the Genetic Investigation of Anthropometric Traits (GIANT) Consortium.¹⁶ In stage 2, general, hip-, and waist-specific polygenic scores for higher WHR were derived using 202 genetic variants independently associated with WHR in stage 1. Stage 2 included data from participants of European ancestry in the UK Biobank and summary statistics from GIANT.¹⁶

In stage 3, associations of polygenic scores with compartmental fat mass measured by dual-energy x-ray absorptiometry (DEXA) were estimated in participants of European ancestry in the UK Biobank, Fenland, and EPIC-Norfolk studies. In stage 4, associations of polygenic scores with 6 cardiometabolic risk factors and with risk of type 2 diabetes and coronary artery disease were estimated using data from participants of European ancestry in the UK Biobank, the EPIC-InterAct case-cohort study, and summary statistics from 6 previously published GWAS. All studies were approved by local institutional review boards and ethics committees, and participants gave written informed consent.

Key Points

Question Do genetic variants that are related to body fat distribution via lower levels of gluteofemoral (hip) fat or via higher levels of abdominal (waist) fat show associations with diabetes or coronary disease risk?

Findings In genetic studies including up to 636 607 people, distinct polygenic risk scores for increased waist-to-hip ratio via lower gluteofemoral or via higher abdominal fat distribution were significantly associated with higher levels of cardiometabolic risk factors and higher risk for type 2 diabetes and coronary disease.

Meaning Genetic mechanisms specifically linked to lower gluteofemoral or higher abdominal fat distribution may independently contribute to the relationship between body shape and cardiometabolic risk.

Studies and Participants

The UK Biobank (data collection: 2006-2018) is a prospective population-based cohort study of people aged 40 to 69 years who were recruited from 2006 to 2010 from 22 centers located in urban and rural areas across the United Kingdom.¹⁵

Fenland (data collection: 2005-2018) is a prospective population-based cohort study of people born from 1950 to 1975 and recruited from 2005 to 2015 from outpatient primary care clinics in Cambridge, Ely, and Wisbech (United Kingdom).¹¹

EPIC-Norfolk (data collection: 1993-2018) is a prospective population-based cohort study of individuals aged 40 to 79 years and living in Norfolk County (rural areas, market towns, and the city of Norwich) in the United Kingdom at recruitment from outpatient primary care clinics in 1993 to 1997.¹⁷

EPIC-InterAct (data collection: 1991-2018) is a case-cohort study nested within the European Prospective Investigation into Cancer and Nutrition (EPIC), a prospective cohort study.¹⁸ EPIC study participants who developed type 2 diabetes after study baseline constituted the incident case group of EPIC-InterAct and a randomly selected group of individuals without diabetes at baseline constituted the subcohort.

Summary statistics from 11 GWAS published by research consortia between 2012 and 2015 were used in the different stages of the study (eMethods 1 and eTable 1 in the Supplement). These included genetic variant associations with BMI, BMI-adjusted WHR, unadjusted WHR, waist and hip circumference from the GIANT Consortium,^{16,19} associations with fasting glucose and fasting insulin from the Meta-analyses of Glucose and Insulin-related Traits Consortium (MAGIC),^{20,21} associations with triglycerides and low-density lipoprotein cholesterol (LDL-C) from the Global Lipid Genetics Consortium (GLGC),²² associations with type 2 diabetes from the Diabetes Genetics Replication and Meta-analysis (DIAGRAM) Consortium²³ and with coronary artery disease from the Coronary Artery Disease Genome-wide Replication and Meta-analysis plus the Coronary Artery Disease Genetics Consortium (CARDIOGRAMplusC4D).²⁴ Data collection took place from 2012 to 2016.

Table 1. Summary of the Study Design

Stage and Aim ^a	Independent Variables	Outcome Variables	Outcome Data Sources	Statistical Significance
Stage 1: genetic discovery (identify genetic variants associated with fat distribution)	More than 2.4 million common genetic variants genome-wide	BMI-adjusted WHR (n = 660 648) and unadjusted WHR (n = 663 598)	UK Biobank; GIANT (summary statistics)	$P < 5 \times 10^{-8}$ in each analysis
Stage 2a: derivation of polygenic scores for higher WHR ^b (select genetic variants into polygenic scores for higher WHR capturing different components of fat distribution)	202 Independent genetic variants from stage 1	Hip (n = 664 446) and waist (n = 683 549) circumference	UK Biobank; GIANT (summary statistics)	Hip- or waist-specific WHR-associated genetic variant: $P < .001$ for association with either hip or waist and at least $P > .20$ for association with the other
Stage 2b: polygenic score performance (assess polygenic scores performance using variance explained and F statistic)	4 Polygenic scores for higher WHR ^b	BMI-adjusted WHR (N = 350 721) ^c	UK Biobank	F statistic >10
Stage 3: polygenic score validation (association of polygenic scores for higher WHR with detailed compartmental fat distribution measures)	Polygenic scores for higher WHR from stage 2b	Arm, trunk, abdominal, abdominal visceral, abdominal subcutaneous, gluteofemoral, leg fat mass, and abdominal/gluteofemoral fat mass ratio measured by DEXA (N = 18 330)	Fenland; EPIC-Norfolk; UK Biobank	$P < .002$
Stage 4: cardiometabolic risk association (association of polygenic scores for higher WHR with cardiovascular risk factors and disease outcomes)	Polygenic scores for higher WHR from stage 2b	Risk factors: systolic (n = 451 402) and diastolic (n = 451 415) blood pressure; fasting insulin (n = 108 557), fasting glucose (n = 133 010); triglycerides (n = 188 577); LDL-C (n = 188 577). Outcomes: type 2 diabetes (69 677 cases, 551 081 controls), coronary disease (85 358 cases, 551 249 controls)	Risk factors: UK Biobank; MAGIC (summary statistics); GLGC (summary statistics). Disease outcomes: UK Biobank; EPIC-InterAct; DIAGRAM (summary statistics); CARDIoGRAMplusC4D (summary statistics)	$P < .002$ for risk factors; $P < .006$ for disease outcomes

Abbreviations: CARDIOGRAMplusC4D, Coronary Artery Disease Genome-wide Replication and Meta-analysis plus the Coronary Artery Disease Genetics Consortium; BMI, body mass index; DEXA, dual-energy x-ray absorptiometry; DIAGRAM, Diabetes Genetics Replication and Meta-analysis Consortium; EPIC, European Prospective Investigation into Cancer and Nutrition; GIANT, Genetic Investigation of Anthropometric Traits Consortium; GLGC, Global Lipid Genetic Consortium; LDL-C, low-density lipoprotein cholesterol; MAGIC, Meta-analyses of Glucose and Insulin-related Traits Consortium; WHR, waist-to-hip ratio.

^a Studies participating in each stage are described in details in the Methods section, Table 2, and eMethods 1 and eTables 1-3 in the [Supplement](#).

^b The 4 polygenic scores included (1) general polygenic score for higher WHR including all 202 independent genetic variants from stage 1; (2) waist-specific polygenic score for higher WHR including 36 genetic variants associated with waist but not hip in stage 2a; (3) hip-specific polygenic score for higher WHR including 22 genetic variants associated with hip but not waist in stage 2a; and (4) general polygenic score for higher WHR including 144 genetic variants not included in the waist-specific or hip-specific polygenic scores.

^c Variance explained was estimated using linear regression models in unrelated participants of European ancestry in the UK Biobank.¹⁵

Detailed descriptions of study design, sources of data, and participants in each stage are in Table 1 and Table 2, and eMethods 1 and eTables 1-3 in the [Supplement](#).

Outcomes

Outcomes of the study were WHR (stages 1 and 2b), hip and waist circumference (stage 2a), compartmental body fat masses (stage 3), 6 cardiometabolic risk factors (systolic and diastolic blood pressure, fasting glucose, fasting insulin, triglycerides, and LDL-C; stage 4), and 2 disease outcomes (type 2 diabetes and coronary disease; stage 4).

In stages 1 and 2, WHR was defined as the ratio of the circumference of the waist to that of the hip, both of which were estimated in centimeters using a Seca 200-cm tape measure. BMI-adjusted WHR was obtained by calculating the residuals for a linear regression model of WHR on age, sex, and BMI.

In stage 3, compartmental fat masses were measured in grams by DEXA, a whole-body, low-intensity x-ray scan that precisely quantifies fat mass in different body regions. In the UK Biobank, DEXA measures were obtained using a GE-

Lunar iDXA instrument. In the Fenland and EPIC-Norfolk studies, DEXA scans were performed using a Lunar Prodigy advanced fan beam scanner (GE Healthcare). Participants were scanned by trained operators using standard imaging and positioning protocols. All the images were manually processed by one trained researcher, who corrected DEXA demarcations according to a standardized procedure as illustrated and described in eFigure 1 and eMethods 1, respectively, in the [Supplement](#). In brief, the arm region included the arm and shoulder area. The trunk region included the neck, chest, and abdominal and pelvic areas. The abdominal region was defined as the area between the ribs and the pelvis, and was enclosed by the trunk region. The leg region included all of the area below the lines that form the lower borders of the trunk. The gluteofemoral region included the hips and upper thighs, and overlapped both leg and trunk regions. The upper demarcation of this region was below the top of the iliac crest at a distance of 1.5 times the abdominal height. DEXA CoreScan software (GE Healthcare) was used to determine visceral abdominal fat mass within the abdominal region.

Table 2. Participants of the UK Biobank Included in This Study^a

Study	UK Biobank ^b
Participants, No.	452 302
Sex, No. (%)	
Men	206 951 (46)
Women	245 351 (54)
Age at baseline, mean (SD), y	57 (8)
Men	57 (8)
Women	57 (8)
Currently smoking, No. (%)	47 036 (10)
Men	25 165 (12)
Women	21 867 (9)
Body mass index, mean (SD) [No. missing] ^c	27.4 (4.8) [1594]
Men	27.9 (4.2)
Women	27.0 (5.1)
Waist-to-hip ratio, mean (SD) [No. missing]	0.87 (0.09) [883]
Men	0.94 (0.07)
Women	0.82 (0.07)
Waist circumference, mean (SD) [No. missing], cm	90 (13.5) [790]
Men	97 (11.4)
Women	85 (12.5)
Hip circumference, mean (SD) [No. missing], cm	103 (9.2) [838]
Men	104 (7.6)
Women	103 (10.3)
Systolic blood pressure, mean (SD) [No. missing], mm Hg	138 (19) [863]
Men	141 (17)
Women	135 (19)
Diastolic blood pressure, mean (SD) [No. missing], mm Hg	82 (10) [850]
Men	84 (10)
Women	81 (10)

^a The exact numbers of participants included in each genetic analysis are in eTable 1 in the [Supplement](#).

^b Genotyping in the UK Biobank was performed using the Affymetrix UK BiLEVE and UK Biobank Axiom arrays, with Haplotype Reference Consortium r1.1 as the imputational panel.

^c Calculated as weight in kilograms divided by height in meters squared.

In stage 4, the risk factors included systolic and diastolic blood pressures, defined as the values of arterial blood pressure in mm Hg measured using an Omron monitor during the systolic and diastolic phases of the heart cycle. Fasting insulin and fasting glucose levels were defined as the values of insulin (log-transformed and expressed in log-pmol/L) in serum and glucose (mmol/L) in whole blood measured in fasting state in individuals without diabetes as previously described.^{20,21} Triglyceride (log-transformed and expressed in log-mmol/L) and LDL-C (mmol/L) levels in the circulation were measured using biochemical assays (triglycerides and 24% of LDL-C values in the GLGC study²²) or derived with the Friedewald formula (76% of LDL-C values in the GLGC study²²) as previously described.

For disease outcomes analyses in the UK Biobank in stage 4, binary definitions of prevalent disease status and a case-control analytical design were used in line with previ-

ous work.^{11,25,26} The definition of diabetes was consistent with validated algorithms.²⁵ Participants were classified as cases of prevalent type 2 diabetes if they met the following 2 criteria: (1) self-reported type 2 diabetes diagnosis or self-reported diabetes medication at nurse interview or at digital questionnaire, or electronic health record consistent with type 2 diabetes (*International Statistical Classification of Diseases and Related Health Problems Tenth Revision* code E11); and (2) age at diagnosis older than 36 years or use of oral anti-diabetic medications (to remove likely type 1 diabetes cases). Controls were participants who (1) did not self-report a diagnosis of diabetes of any type, (2) did not take any diabetes medications, and (3) did not have an electronic health record of diabetes of any type.

In EPIC-InterAct, the outcome was incident type 2 diabetes. Incident type 2 diabetes case status was defined on the basis of evidence of type 2 diabetes from self-report, primary care registers, drug registers (medication use), hospital record, or mortality data.¹⁸ Incident type 2 diabetes cases were considered to be verified if evidence from a minimum of 2 of these independent sources was present.¹⁸ Participants without type 2 diabetes at baseline were randomly selected from participating EPIC study cohorts and constituted the subcohort group of EPIC-InterAct. Participants with prevalent diabetes at study baseline were excluded from EPIC-InterAct.

In the UK Biobank, prevalent coronary artery disease was defined as either (1) myocardial infarction or coronary disease documented in the participant's medical history at the time of enrollment by a trained nurse or (2) an electronic health record of acute myocardial infarction or its complications (*International Statistical Classification of Diseases and Related Health Problems, Tenth Revision* codes I21-I23). Controls were participants who did not meet any of these criteria.

Statistical Analysis

In stage 1, GWAS analyses were performed in the UK Biobank using BOLT-LMM,²⁷ which fits linear mixed models accounting for relatedness between individuals using a genomic kinship matrix.^{27,28} An inverse-variance weighted, fixed-effect meta-analysis of results from the UK Biobank and GIANT was performed using METAL.²⁹ This study focused on 2 446 094 common genetic variants in autosomal chromosomes (ie, not X or Y chromosome) with minor allele frequency of 0.5% or greater captured in both the UK Biobank and GIANT. Restriction to individuals of European ancestry, use of linear mixed models (UK Biobank), and adjustment for genetic principal components and genomic inflation factor (GIANT) were used to minimize type I error.

Quality measures of genuine genetic association signal vs possible confounding by population stratification or relatedness included the mean χ^2 statistic, the linkage-disequilibrium score (LDSC) regression intercept, and its attenuation ratio (eMethods 2 in the [Supplement](#)), as recommended for genetic studies of this size using linear mixed model estimates.²⁸ Values of LDSC-regression intercept below 1.5 and an attenuation ratio statistic (a measure of proportionality between LDSC-regression intercept and χ^2 statistic calculated as: [LDSC intercept - 1] / [mean χ^2 statistic - 1]) equal to

or below 0.08 are consistent with optimal control of genetic confounding.²⁸ Genetic variants were taken forward to stage 2 if they were associated with both BMI-adjusted WHR and unadjusted WHR at the conventional genome-wide level of statistical significance ($P < 5 \times 10^{-8}$ in each analysis).³⁰ The use of both BMI-adjusted and unadjusted results prevented the inclusion of variants associated with higher WHR via collider bias³¹ or via a primary association with higher BMI.

A forward-selection process was used to select independent genetic variants for stage 2. At each iteration, the genetic variant with the lowest P value for BMI-adjusted WHR was selected, while genetic variants within 1 000 000 base pairs either side of that genetic variant were discarded from further iterations. The resulting list of genetic variants was further filtered on the basis of pairwise linkage disequilibrium such that the final list of independent genetic variants had no or negligible correlation (pairwise $R^2 < .05$). Full details about genetic analyses are in eMethods 2 in the [Supplement](#).

In stage 2, polygenic scores capturing genetic predisposition to higher WHR were derived by combining the 202 independent genetic variants from stage 1 (or subsets of the 202 variants as described below), weighted by their association with BMI-adjusted WHR in stage 1. A general polygenic score for higher WHR was derived by combining all 202 genetic variants. A waist-specific polygenic score capturing genetic predisposition to higher WHR via higher abdominal fat was derived by combining 36 variants specifically associated with waist ($P < .00025$, a Bonferroni correction for 202 genetic variants, $0.05/202$) but not with hip circumference ($P > .20$, an arbitrary threshold). A hip-specific polygenic score capturing genetic predisposition to higher WHR via lower gluteofemoral fat was derived by combining 22 variants specifically associated with hip ($P < .00025$, $0.05/202$) but not with waist circumference ($P > .50$, a stricter arbitrary threshold, which was necessary because of residual associations with waist circumference of a polygenic score initially derived using $P > .20$; eMethods 3 in the [Supplement](#)). A fourth polygenic score was derived by combining 144 genetic variants not included in the waist- or hip-specific polygenic scores.

The statistical performance of these polygenic scores was assessed by estimating the proportion of the variance in BMI-adjusted WHR accounted for by the score (variance explained) and by the F statistic (eMethods 4 in the [Supplement](#)). The F statistic is a measure of the ability of the polygenic score to predict the independent variable (BMI-adjusted WHR). Values of F statistic greater than 10 have been considered to provide evidence of a statistically robust polygenic score.^{26,32} Statistical power calculations for the association with disease outcomes were also performed (eMethods 4 and eFigure 2 in the [Supplement](#)).

In stages 3 and 4, associations of polygenic scores with DEXA phenotypes, cardiometabolic risk factors, and outcomes were estimated in each study separately and results were combined using fixed-effect inverse-variance weighted meta-analysis. In individual-level data analyses, polygenic scores were calculated for each study participant by adding the number of copies of each contributing genetic variant weighted by its association estimate in SD units of BMI-adjusted WHR

per allele from stage 1. Association of polygenic scores with outcomes were estimated using linear, logistic, or Cox regression models as appropriate for outcome type and study design. Regression models were adjusted for age, sex, and genetic principal components or a genomic kinship matrix to minimize genetic confounding.

In UK Biobank disease outcomes analyses, prevalent disease status was defined as a binary variable and logistic regression was used to estimate the odds ratio (OR) of disease per 1-SD increase in BMI-adjusted WHR due to a given polygenic score. In EPIC-InterAct, Cox regression weighted for case-cohort design was used to estimate the hazard ratio of incident type 2 diabetes per 1-SD increase in BMI-adjusted WHR due to a given polygenic score.

In summary statistics analyses, estimates equivalent to those of individual-level analyses were obtained using inverse-variance weighted meta-analysis of the association of each genetic variant in the polygenic score with the outcome, divided by the association of that genetic variant with BMI-adjusted WHR.³³ These analytical approaches assume normal distributions for polygenic scores and continuous outcomes. They also assume a linear relationship of the polygenic score with continuous outcomes (linear regression), with the log-odds of binary outcomes (logistic regression), or with the log-hazard of incident disease (Cox regression). All of these assumptions were largely met in this study (eMethods 5, eTable 4, and eFigures 3-6 in the [Supplement](#)). Meta-analyses of log-ORs and log-hazard ratios of disease assumed that these estimates are similar, an assumption that was shown to be reasonable in a sensitivity analysis conducted in EPIC-InterAct (eMethods 5 and eFigure 7 in the [Supplement](#)).

In stages 3 and 4, associations with continuous outcomes were expressed in standardized or clinical units of outcome per 1-SD increase in BMI-adjusted WHR (corresponding to 0.056 ratio units of age-, sex-, and BMI-residualized WHR in the UK Biobank) due to a given polygenic score (eMethods 5 and eTable 5 in the [Supplement](#)). Associations with disease outcomes were expressed as ORs for outcome per 1-SD increase in BMI-adjusted WHR due to a given polygenic score. Absolute risk increases (ARIs) for disease outcomes were estimated using the estimated ORs and the incidence of type 2 diabetes or coronary disease in the United States (eMethods 5 in the [Supplement](#)). The threshold of statistical significance for association with DEXA phenotypes was $P < .002$ ($0.05/32 = 0.0016$, Bonferroni correction for 8 outcomes and 4 polygenic scores), $P < .002$ for association with cardiometabolic risk factors ($0.05/24 = 0.0021$, Bonferroni correction for 6 outcomes and 4 polygenic scores), and $P < .006$ for association with type 2 diabetes and coronary disease ($0.05/8 = 0.0063$, Bonferroni correction for 2 outcomes and 4 polygenic scores). All reported P values were from 2-tailed statistical tests.

In addition to deriving specific polygenic scores, the independent association of gluteofemoral or abdominal fat distribution with outcomes was studied using multivariable genetic association analyses adjusting for either of these 2 components of body fat distribution (eMethods 6 and eFigure 8 in the [Supplement](#)). Adjusting for abdominal fat

distribution measures was used as a way of estimating the residual association of the polygenic score with outcomes via gluteofemoral fat distribution, while adjusting for gluteofemoral fat distribution measures as a way of estimating the residual association via abdominal fat distribution (eFigure 8 in the [Supplement](#)).

To obtain adjusted association estimates, multivariable-weighted regression models were fitted in which the association of the 202-variant general polygenic score (exposure) with cardiometabolic risk factors or diseases (outcomes) was estimated while adjusting for a polygenic score comprising the same 202 genetic variants but weighted for measures of abdominal fat distribution or measures of gluteofemoral fat distribution (covariates).³⁴ A detailed description of these analysis methods and their assumptions is in eMethods 6 and eFigures 8-9 in the [Supplement](#). This method was also used to conduct a post hoc exploratory analysis of the association of the hip-specific polygenic score with cardiometabolic disease outcomes after adjusting for visceral abdominal fat mass estimates.

Six different secondary or sensitivity analyses were conducted to estimate the association of polygenic scores with other phenotypes including high-density lipoprotein cholesterol (HDL-C), triglyceride/HDL-C ratio, height, and nondiabetic hyperglycemia and to assess the robustness of the main analysis to associations with height, sex-specific associations, or the possibility of false-positive associations in stage 1 or stage 2 (eMethods 7 in the [Supplement](#)).

Statistical analyses were performed using Stata version 14.2 (StataCorp), R version 3.2.2 (The R Foundation for Statistical Computing), BOLT-LMM version 2.3.2,^{27,28} and METAL version 2011-03-25.²⁹

Results

Genetic Predisposition to Higher WHR via Lower Gluteofemoral or via Higher Abdominal Fat

Among 452 302 participants of European ancestry in the UK Biobank, the mean (SD) age was 57 (8) years, 245 351 (54%) were women, and the mean (SD) WHR was 0.87 (0.09) (Table 2). In genome-wide association analyses of BMI-adjusted WHR ($n = 660\,648$; mean $\chi^2 = 2.50$; LDSC-regression intercept, 1.098 [95% CI, 1.063-1.134]; attenuation ratio, 0.07 [95% CI, 0.04-0.09]) and unadjusted WHR ($n = 663\,598$; mean $\chi^2 = 2.68$; LDSC-regression intercept, 1.096 [95% CI, 1.064-1.129]; attenuation ratio, 0.06 [95% CI, 0.04-0.08]), there was evidence of optimal control for genetic confounding (eMethods 2 and eFigures 10-11 in the [Supplement](#)).

A total of 202 independent genetic variants were associated with both BMI-adjusted WHR and unadjusted WHR ($P < 5 \times 10^{-8}$ in each analysis; eTable 6 and eFigures 12-13 in the [Supplement](#)). These 202 genetic variants were used to derive polygenic scores for higher WHR (Table 1). The 202-variant general score (variance in BMI-adjusted WHR explained by score in the UK Biobank = 3.4%, F statistic = 12 231), 22-variant hip-specific score (variance explained = 0.4%, F statistic = 1550), 36-variant waist-specific score (variance explained = 0.4%, F statistic = 1444), and 144-variant general

score (variance explained = 2.6%, F statistic = 9177) were statistically robust polygenic scores for BMI-adjusted WHR (eMethods 4 and eFigure 2 in the [Supplement](#)).

In 18 330 people with DEXA compartmental fat measures, all polygenic scores for higher WHR were associated with a higher abdominal-to-gluteofemoral fat mass ratio, a refined measure of body fat distribution, but were associated with different patterns of compartmental fat mass distribution (Figure 1; eFigures 14-15 in the [Supplement](#)). The general 202-variant and 144-variant polygenic scores were associated with higher visceral abdominal and lower gluteofemoral fat mass (Figure 1A; eFigure 15 in the [Supplement](#)). The waist-specific polygenic score for higher WHR was associated with higher abdominal fat mass, but not with gluteofemoral or leg fat mass (Figure 1B). The hip-specific polygenic score for higher WHR was associated with lower gluteofemoral and leg fat mass, but did not show statistically significant associations with abdominal fat mass (Figure 1B). Participants with higher values of the hip-specific polygenic score had numerically higher visceral abdominal fat mass, but the difference was not statistically significant when accounting for multiple tests (Figure 1B).

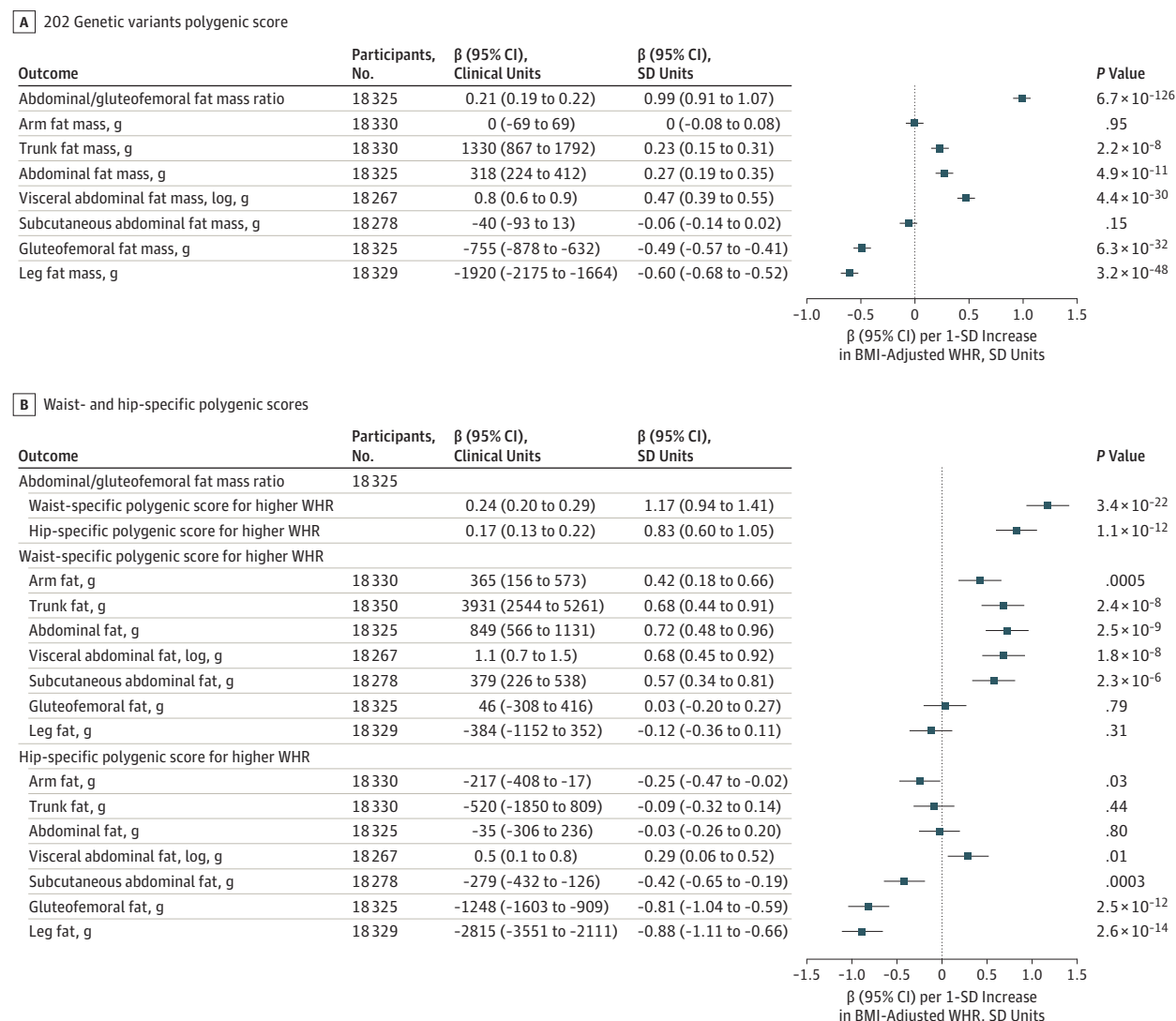
Associations With Cardiometabolic Risk Factors and Disease Outcomes

In 636 607 people, the 202-variant polygenic score for higher WHR was associated with higher odds of type 2 diabetes and coronary artery disease and an unfavorable cardiometabolic risk profile (eFigure 16 in the [Supplement](#)), consistent with previous studies of approximately 50 genetic variants.^{16,26,35} In secondary analyses, there were associations with lower HDL-C, higher triglyceride/HDL-C ratio, and higher odds of nondiabetic hyperglycemia (eMethods 7 and eTables 7-8 in the [Supplement](#)). Associations with cardiometabolic disease outcomes were similar in men and women, with no evidence of sex interaction (interaction P for type 2 diabetes = .19; interaction P for coronary artery disease = .80; eTable 9 in the [Supplement](#)).

Both hip-specific and waist-specific polygenic scores for higher WHR were associated with higher systolic and diastolic blood pressure and triglyceride level, with similar association estimates for a 1-SD increase in BMI-adjusted WHR (Figure 2A). While the hip-specific polygenic score was associated with higher fasting insulin and higher LDL-C levels, the waist-specific polygenic score did not have statistically significant associations with these traits (Figure 2A). Both the hip-specific and waist-specific polygenic scores were associated with higher odds of type 2 diabetes and coronary disease, similarly in men and women (Figure 2B and eTable 9 in the [Supplement](#)). The hip-specific polygenic score had a statistically larger association estimate for diabetes than the waist-specific polygenic score per 1-SD increase in BMI-adjusted WHR (OR, 2.54 [95% CI, 2.17-2.96] vs 1.57 [95% CI, 1.34-1.83]; ARI, 12.0 [95% CI, 9.1-15.3] vs 4.4 [95% CI, 2.7-6.5] cases per 1000 participant-years; P for heterogeneity < .001; Figure 2B).

In a post-hoc multivariable analysis adjusting for visceral abdominal fat mass estimates, the hip-specific polygenic score showed a statistically significant association with higher odds of type 2 diabetes and coronary disease (OR for diabetes per

Figure 1. Associations With Compartmental Fat Mass of Polygenic Scores for Higher Waist-to-Hip Ratio (WHR)



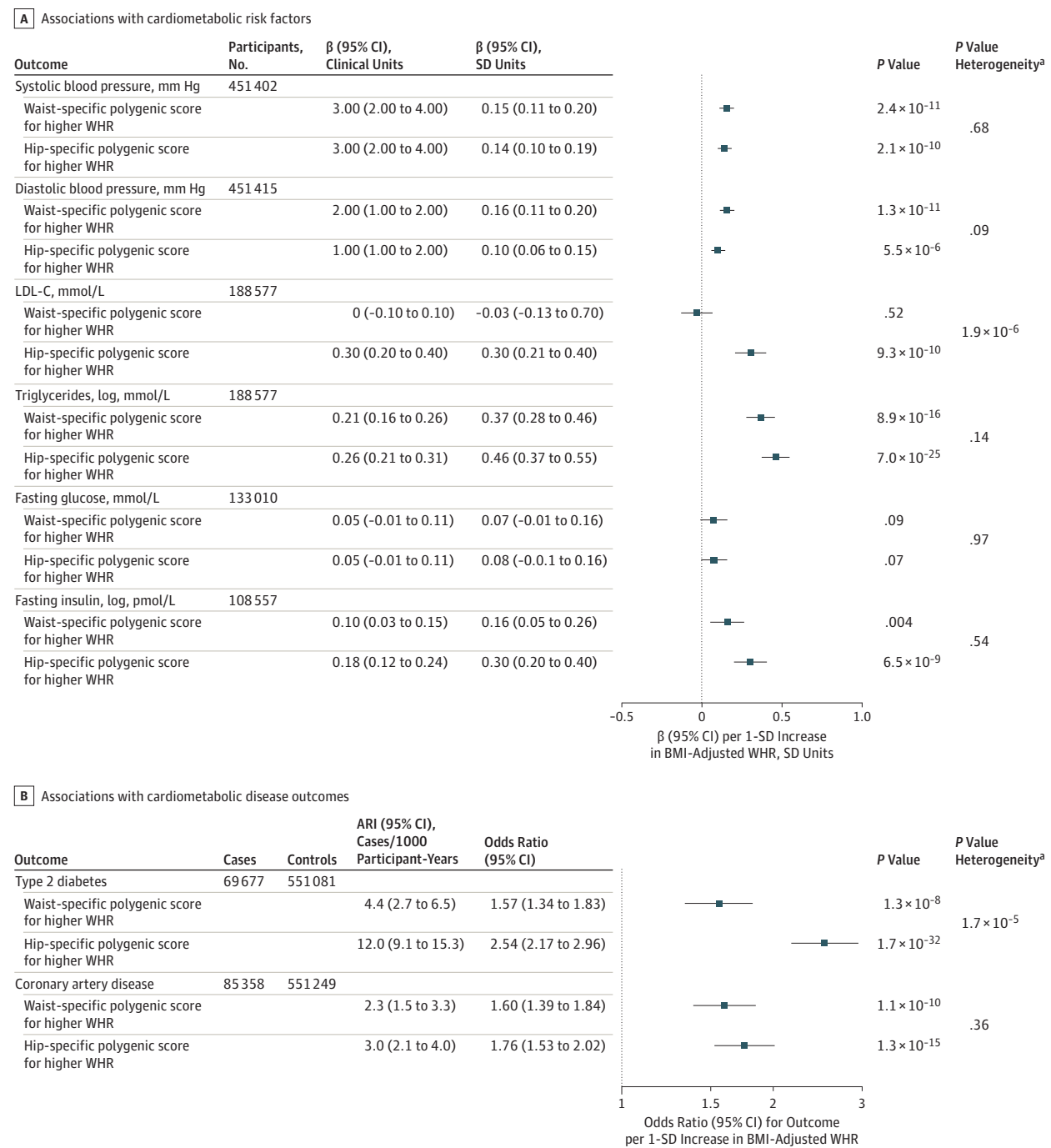
A, Associations with compartmental fat mass for the 202-genetic variants polygenic score for higher WHR are shown. Associations are reported in clinical or standardized units of continuous outcome per 1-SD increase in body mass index (BMI)-adjusted WHR (corresponding to 0.056 ratio units of age-, sex-, and BMI-residualized WHR in the UK Biobank) due to the polygenic score. The statistical significance threshold for analyses reported in this panel was $P < .002$. B, Associations with compartmental fat mass for the waist- or hip-specific polygenic scores for higher WHR are shown. Associations

were estimated in up to 18 330 individuals of European ancestry in the UK Biobank,¹⁵ Fenland,¹¹ and EPIC-Norfolk¹⁷ studies. Associations are reported in clinical or standardized units of continuous outcome per 1-SD increase in BMI-adjusted WHR (corresponding to 0.056 ratio units of age-, sex-, and BMI-residualized WHR in the UK Biobank) due to the polygenic score used in a given analysis. The statistical significance threshold for analyses reported in this panel was $P < .002$.

1-SD increase in BMI-adjusted WHR due to the hip-specific polygenic score, 2.84 [95% CI, 1.98-4.08], ARI, 14.4 [95% CI, 7.6-24] cases per 1000 participant-years, $P < .001$; OR for coronary disease, 1.74 [95% CI, 1.35-2.25], ARI, 2.9 [95% CI, 1.4-4.9] cases per 1000 participant-years, $P < .001$. The 144-variant polygenic score showed associations with risk factors and disease outcomes similar to those observed for the 202-variant general polygenic score (eFigure 15 in the Supplement). Sensitivity analyses supported the robustness of the main analysis to sex-specific associations, associations with height, or the possibility of false-positive associations in stage 1 or stage 2 (eMethods 7 and eTables 9-11 in the Supplement).

In multivariable analyses adjusting for hip circumference estimates, the 202-variant polygenic score had a pattern of association with compartmental fat mass, cardiometabolic risk factors, and disease outcomes, which was similar to that of the waist-specific polygenic score (eFigures 8D and 17 in the Supplement). The 202-variant polygenic score remained associated with higher risk of type 2 diabetes and coronary disease even when adjusting for hip circumference and leg fat mass in the same model (eTable 12 in the Supplement).

In multivariable analyses adjusting for waist circumference estimates, the 202-variant polygenic score had a pattern of association with compartmental fat mass, cardiometabolic

Figure 2. Associations With Cardiometabolic Risk Factors and Disease Outcomes of Waist- or Hip-Specific Polygenic Scores for Higher Waist-to-Hip Ratio (WHR)

A, Associations with cardiometabolic risk factors for the waist- or hip-specific polygenic scores for higher WHR are shown. Associations are reported in clinical or standardized units of continuous outcome per 1-SD increase in body mass index (BMI)-adjusted WHR (corresponding to 0.056 ratio units of age-, sex-, and BMI-residualized WHR in the UK Biobank) due to the polygenic score used in a given analysis. Data on blood pressure were from the UK Biobank¹⁵; data on low-density lipoprotein (LDL-C) and triglyceride levels were from the Global Lipids Genetics Consortium²²; and data on fasting insulin and fasting glucose were from the Meta-analyses of Glucose and Insulin-Related Traits Consortium.^{20,21} The statistical significance threshold for analyses reported in this panel was $P < .002$. B, Associations with type 2 diabetes and coronary artery disease risk for the waist- or hip-specific polygenic scores for higher WHR are

shown. Associations are reported in odds ratio or absolute risk increase (ARI) per 1-SD increase in BMI-adjusted WHR (corresponding to 0.056 ratio units of age-, sex-, and BMI-residualized WHR in the UK Biobank) due to the polygenic score used in a given analysis. Associations with type 2 diabetes were estimated in 69 677 cases and 551 081 controls from the DIAGRAM Consortium,²³ EPIC-InterAct,¹⁸ and the UK Biobank.¹⁵ Associations with coronary artery disease were estimated in 85 358 cases and 551 249 controls from the UK Biobank¹⁵ and the CARDIoGRAMplusC4D Consortium.²⁴ The statistical significance threshold for analyses reported in this panel was $P < .006$.

^a P value for heterogeneity in association estimates for waist- vs hip-specific polygenic score.

risk factors, and disease outcomes, which was similar to that of the hip-specific polygenic score (eFigures 8C and 17 in the Supplement). The 202-variant polygenic score remained associated with higher risk of type 2 diabetes and coronary disease even when adjusting for waist circumference and visceral abdominal fat mass in the same model (eTable 12 in the Supplement).

In multivariable analyses adjusting for both waist and hip circumference estimates, the 202-variant polygenic score was not associated with risk of type 2 diabetes or coronary disease (eFigure 8B and eTable 12 in the Supplement).

Discussion

This large study identified distinct genetic variants associated with a higher WHR via specific associations with lower gluteofemoral or higher abdominal fat distribution. Both of these distinct sets of genetic variants were associated with higher levels of cardiometabolic risk factors and a higher risk of type 2 diabetes and coronary disease. While this study supports the theory that an enhanced accumulation of fat in the abdominal cavity may be a cause of cardiovascular and metabolic disease, it also provides novel evidence of a possible independent role of the relative inability to expand the gluteofemoral fat compartment.

Previous studies of approximately 50 genomic regions associated with BMI-adjusted WHR¹⁶ have shown an association between genetic predisposition to higher WHR and higher risk of cardiometabolic disease,^{26,35} mirroring the well-established BMI-independent association of a higher WHR with incident cardiovascular and metabolic disease in large-scale observational studies.^{2,3} While these results have been widely interpreted as supportive of the role of abdominal fat deposition in cardiometabolic risk independent of overall adiposity, the etiologic contribution of lower levels of gluteofemoral and peripheral fat to these associations has not been considered.

The results of this study support the hypothesis that an impaired ability to preferentially deposit excess calories in the gluteofemoral fat compartment leads to higher cardiometabolic risk in the general population. This is consistent with observations in severe forms of partial lipodystrophy^{6,7} and with the emerging evidence of a shared genetic background between extreme lipodystrophies and fat distribution in the general population.¹¹ This large human genetic study adds to a growing body of evidence linking gluteofemoral and subcutaneous adipose tissue biology with a favorable metabolic profile.⁸⁻¹⁰ The hip-specific polygenic score for higher WHR was not significantly associated with measures of central fat in DEXA analyses and, in a post hoc analysis, its association with cardiometabolic disease outcomes was independent of visceral abdominal fat mass. These associations may perhaps reflect the secondary deposition within ectopic fat depots, such as liver, cardiac and skeletal muscle, and pancreas, of excess calories that cannot be accommodated in gluteofemoral fat.^{36,37}

It has been hypothesized that the association between fat distribution and cardiometabolic risk is due to an enhanced deposition of intra-abdominal fat generating a molecular mi-

lieu that fosters abdominal organ insulin resistance.³⁸ The results of this study support a role of abdominal fat distribution, but they also suggest that impaired gluteofemoral fat distribution may contribute to the relationship between body shape and cardiometabolic health outcomes.

Limitations

This study has several limitations. First, as this is an observational study, it cannot establish causality. Second, the discovery and characterization of genetic variants was conducted in a large data set but was limited to individuals of European ancestry. While the genetic determinants of anthropometric phenotypes may be partly shared across different ethnicities,^{16,39,40} further investigations in other populations and ethnicities will be required for a complete understanding of the genetic relationships between body shape and cardiometabolic risk. Third, this study was largely based on population-based cohorts, the participants of which are usually healthier than the general population, and used analytical approaches that deliberately minimized the influence of outliers, in this case people with extreme fat distribution. Genetic studies in people with extreme fat distribution may help broaden understanding of the genetic basis of this risk factor.

Fourth, while disease case definitions were based on widely adopted criteria, random misclassification of cases/controls cannot be excluded, which would bias association estimates toward the null. Fifth, absolute risk increase estimates are based on incidence rates and ORs calculated in different populations and therefore assume that these populations are similar. Sixth, *P* value thresholds used to exclude associations with the other component of fat distribution for genetic variants included in waist- or hip-specific polygenic scores were arbitrarily chosen, but are more stringent than traditionally used cutoffs (eg, *P* > .05) and polygenic score results were confirmed by multivariable genetic analyses, which were independent of such thresholds.

Seventh, this analysis focused on common genetic variants captured in both UK Biobank and GIANT and, by design, did not investigate the role of rare genetic variation or of other variants captured by dense imputation in the UK Biobank. Eighth, there was a statistically significant difference in the association of hip- vs waist-specific polygenic scores with diabetes risk, with greater estimated magnitude of association for the hip-specific polygenic score. However, given that the difference in absolute risk was small, this observation does not necessarily represent a strong signal of mechanistic difference or differential clinical importance in the relationship between the gluteofemoral vs abdominal components of fat distribution and diabetes risk.

Conclusions

Distinct genetic mechanisms may be linked to gluteofemoral and abdominal fat distribution that are the basis for the calculation of the waist-to-hip ratio. These findings may improve risk assessment and treatment of diabetes and coronary disease.

ARTICLE INFORMATION

Accepted for Publication: November 13, 2018.

Author Contributions: Dr Lotta had full access to all of the data in the study and takes responsibility for the integrity of the data and the accuracy of the data analysis.

Concept and design: Lotta, O'Rahilly, Scott, Savage, Wareham, Langenberg.

Acquisition, analysis, or interpretation of data:

Lotta, Wittemans, Zuber, Stewart, Sharp, Luan, Day, Li, Bowker, Cai, De Lucia Rolfe, Khaw, Perry, Scott, Burgess, Wareham, Langenberg.

Drafting of the manuscript: Lotta, De Lucia Rolfe, Perry, O'Rahilly, Savage, Wareham, Langenberg.

Critical revision of the manuscript for important intellectual content: Lotta, Wittemans, Zuber, Stewart, Sharp, Luan, Day, Li, Bowker, Cai, De Lucia Rolfe, Khaw, Scott, Burgess, Wareham, Langenberg.

Statistical analysis: Lotta, Wittemans, Zuber, Stewart, Sharp, Luan, Day, Li, Bowker, Cai, De Lucia Rolfe, Perry, Burgess, Langenberg.

Obtained funding: Khaw, Wareham, Langenberg.

Administrative, technical, or material support:

De Lucia Rolfe, Khaw, Wareham, Langenberg.

Supervision: Lotta, Wareham, Langenberg.

Conflict of Interest Disclosures: Dr O'Rahilly reported personal fees from Pfizer, AstraZeneca, MedImmune, Novo Nordisk, and ERX Pharmaceuticals and grants from Aegerion outside the submitted work. Dr Scott is an employee and shareholder in GlaxoSmithKline. Dr Burgess reported grants from Wellcome Trust/Royal Society and the UK Medical Research Council during the conduct of the study. No other disclosures were reported.

Funding/Support: This study was funded by the United Kingdom's Medical Research Council (MRC) through grants MC_UU_12015/1, MC_PC_13046, MC_PC_13048, and MR/L00002/1. This work was supported by the MRC Metabolic Diseases Unit (MC_UU_12012/5) and the Cambridge National Institute for Health Research (NIHR) Biomedical Research Centre and EU/EFPIA Innovative Medicines Initiative Joint Undertaking (EMIF grant: 115372). Funding for the EPIC-InterAct Study was provided by the EU FP6 program (grant LSHM_CT_2006_037197). Drs Savage and O'Rahilly are supported by the Wellcome Trust (WT107064 and WT095515, respectively), the MRC Metabolic Disease Unit, the NIHR Cambridge Biomedical Research Centre, and the NIHR Rare Disease Translational Research Collaboration.

Role of the Funder/Sponsor: The funders had no role in the design and conduct of the study; collection, management, analysis, and interpretation of the data; preparation, review, or approval of the manuscript; and decision to submit the manuscript for publication.

Additional Contributions: This research was conducted using the UK Biobank resource and data from the EPIC-InterAct, Fenland, and EPIC-Norfolk studies. We gratefully acknowledge the help of the MRC Epidemiology Unit Support Teams, including the field, laboratory, and data management teams.

REFERENCES

1. Vague J. The degree of masculine differentiation of obesities: a factor determining predisposition to diabetes, atherosclerosis, gout, and uric calculous

disease. *Am J Clin Nutr*. 1956;4(1):20-34. doi:10.1093/ajcn/4.1.20

2. Yusuf S, Hawken S, Ounpuu S, et al; INTERHEART Study Investigators. Obesity and the risk of myocardial infarction in 27,000 participants from 52 countries: a case-control study. *Lancet*. 2005;366(9497):1640-1649. doi:10.1016/S0140-6736(05)67663-5

3. Biggs ML, Mukamal KJ, Luchsinger JA, et al. Association between adiposity in midlife and older age and risk of diabetes in older adults. *JAMA*. 2010;303(24):2504-2512. doi:10.1001/jama.2010.843

4. Langenberg C, Sharp SJ, Schulze MB, et al; InterAct Consortium. Long-term risk of incident type 2 diabetes and measures of overall and regional obesity: the EPIC-InterAct case-cohort study. *PLoS Med*. 2012;9(6):e1001230. doi:10.1371/journal.pmed.1001230

5. Stefan N, Häring HU, Hu FB, Schulze MB. Metabolically healthy obesity: epidemiology, mechanisms, and clinical implications. *Lancet Diabetes Endocrinol*. 2013;1(2):152-162. doi:10.1016/S2213-8587(13)70062-7

6. Garg A. Acquired and inherited lipodystrophies. *N Engl J Med*. 2004;350(12):1220-1234. doi:10.1056/NEJMr025261

7. Semple RK, Savage DB, Cochran EK, Gordon P, O'Rahilly S. Genetic syndromes of severe insulin resistance. *Endocr Rev*. 2011;32(4):498-514. doi:10.1210/er.2010-0020

8. Karpe F, Pinnick KE. Biology of upper-body and lower-body adipose tissue: link to whole-body phenotypes. *Nat Rev Endocrinol*. 2015;11(2):90-100. doi:10.1038/nrendo.2014.185

9. Rydén M, Andersson DP, Bergström IB, Arner P. Adipose tissue and metabolic alterations: regional differences in fat cell size and number matter, but differently: a cross-sectional study. *J Clin Endocrinol Metab*. 2014;99(10):E1870-E1876. doi:10.1210/jc.2014-1526

10. Dahlman I, Rydén M, Brodin D, Grallert H, Strawbridge RJ, Arner P. Numerous genes in loci associated with body fat distribution are linked to adipose function. *Diabetes*. 2016;65(2):433-437. doi:10.2337/db15-0828

11. Lotta LA, Gulati P, Day FR, et al; EPIC-InterAct Consortium; Cambridge FPLD1 Consortium. Integrative genomic analysis implicates limited peripheral adipose storage capacity in the pathogenesis of human insulin resistance. *Nat Genet*. 2017;49(1):17-26. doi:10.1038/ng.3714

12. Scott RA, Fall T, Pasko D, et al; RISC study group; EPIC-InterAct consortium. Common genetic variants highlight the role of insulin resistance and body fat distribution in type 2 diabetes, independent of obesity. *Diabetes*. 2014;63(12):4378-4387. doi:10.2337/db14-0319

13. Yaghootkar H, Scott RA, White CC, et al. Genetic evidence for a normal-weight "metabolically obese" phenotype linking insulin resistance, hypertension, coronary artery disease, and type 2 diabetes. *Diabetes*. 2014;63(12):4369-4377. doi:10.2337/db14-0318

14. Yaghootkar H, Lotta LA, Tyrrell J, et al. Genetic evidence for a link between favorable adiposity and lower risk of type 2 diabetes, hypertension, and

heart disease. *Diabetes*. 2016;65(8):2448-2460. doi:10.2337/db15-1671

15. Sudlow C, Gallacher J, Allen N, et al. UK Biobank: an open access resource for identifying the causes of a wide range of complex diseases of middle and old age. *PLoS Med*. 2015;12(3):e1001779. doi:10.1371/journal.pmed.1001779

16. Shungin D, Winkler TW, Croteau-Chonka DC, et al; ADIPOGen Consortium; CARDIOGRAMplusC4D Consortium; CKDGen Consortium; GEFOS Consortium; GENIE Consortium; GLGC; ICBP; International Endogene Consortium; LifeLines Cohort Study; MAGIC Investigators; MuTHER Consortium; PAGE Consortium; ReproGen Consortium. New genetic loci link adipose and insulin biology to body fat distribution. *Nature*. 2015;518(7538):187-196. doi:10.1038/nature14132

17. Day N, Oakes S, Luben R, et al. EPIC-Norfolk: study design and characteristics of the cohort: European Prospective Investigation of Cancer. *Br J Cancer*. 1999;80(suppl 1):95-103.

18. Langenberg C, Sharp S, Forouhi NG, et al; InterAct Consortium. Design and cohort description of the InterAct Project: an examination of the interaction of genetic and lifestyle factors on the incidence of type 2 diabetes in the EPIC Study. *Diabetologia*. 2011;54(9):2272-2282. doi:10.1007/s00125-011-2182-9

19. Locke AE, Kahali B, Berndt SI, et al; LifeLines Cohort Study; ADIPOGen Consortium; AGEN-BMI Working Group; CARDIOGRAMplusC4D Consortium; CKDGen Consortium; GLGC; ICBP; MAGIC Investigators; MuTHER Consortium; MiGen Consortium; PAGE Consortium; ReproGen Consortium; GENIE Consortium; International Endogene Consortium. Genetic studies of body mass index yield new insights for obesity biology. *Nature*. 2015;518(7538):197-206. doi:10.1038/nature14177

20. Scott RA, Lagou V, Welch RP, et al; DIABetes Genetics Replication and Meta-analysis (DIAGRAM) Consortium. Large-scale association analyses identify new loci influencing glycemic traits and provide insight into the underlying biological pathways. *Nat Genet*. 2012;44(9):991-1005. doi:10.1038/ng.2385

21. Manning AK, Hivert MF, Scott RA, et al; DIABetes Genetics Replication And Meta-analysis (DIAGRAM) Consortium; Multiple Tissue Human Expression Resource (MUTHER) Consortium. A genome-wide approach accounting for body mass index identifies genetic variants influencing fasting glycemic traits and insulin resistance. *Nat Genet*. 2012;44(6):659-669. doi:10.1038/ng.2274

22. Willer CJ, Schmidt EM, Sengupta S, et al; Global Lipids Genetics Consortium. Discovery and refinement of loci associated with lipid levels. *Nat Genet*. 2013;45(11):1274-1283. doi:10.1038/ng.2797

23. Morris AP, Voight BF, Teslovich TM, et al; Wellcome Trust Case Control Consortium; Meta-Analyses of Glucose and Insulin-related Traits Consortium (MAGIC) Investigators; Genetic Investigation of ANthropometric Traits (GIANT) Consortium; Asian Genetic Epidemiology Network-Type 2 Diabetes (AGEN-T2D) Consortium; South Asian Type 2 Diabetes (SAT2D) Consortium; DIABetes Genetics Replication And Meta-analysis (DIAGRAM) Consortium. Large-scale association

analysis provides insights into the genetic architecture and pathophysiology of type 2 diabetes. *Nat Genet*. 2012;44(9):981-990. doi:10.1038/ng.2383

24. Nikpay M, Goel A, Won HH, et al. A comprehensive 1,000 genomes-based genome-wide association meta-analysis of coronary artery disease. *Nat Genet*. 2015;47(10):1121-1130. doi:10.1038/ng.3396
25. Eastwood SV, Mathur R, Atkinson M, et al. Algorithms for the capture and adjudication of prevalent and incident diabetes in UK Biobank. *PLoS One*. 2016;11(9):e0162388. doi:10.1371/journal.pone.0162388
26. Emdin CA, Khera AV, Natarajan P, et al. Genetic association of waist-to-hip ratio with cardiometabolic traits, type 2 diabetes, and coronary heart disease. *JAMA*. 2017;317(6):626-634. doi:10.1001/jama.2016.21042
27. Loh PR, Tucker G, Bulik-Sullivan BK, et al. Efficient Bayesian mixed-model analysis increases association power in large cohorts. *Nat Genet*. 2015;47(3):284-290. doi:10.1038/ng.3190
28. Loh PR, Kichaev G, Gazal S, Schoech AP, Price AL. Mixed-model association for Biobank-scale datasets. *Nat Genet*. 2018;50(7):906-908. doi:10.1038/s41588-018-0144-6
29. Willer CJ, Li Y, Abecasis GR. METAL: fast and efficient meta-analysis of genomewide association scans. *Bioinformatics*. 2010;26(17):2190-2191. doi:10.1093/bioinformatics/btq340
30. Wellcome Trust Case Control Consortium. Genome-wide association study of 14,000 cases of seven common diseases and 3,000 shared controls. *Nature*. 2007;447(7145):661-678. doi:10.1038/nature05911
31. Aschard H, Vilhjálmsson BJ, Joshi AD, Price AL, Kraft P. Adjusting for heritable covariates can bias effect estimates in genome-wide association studies. *Am J Hum Genet*. 2015;96(2):329-339. doi:10.1016/j.ajhg.2014.12.021
32. Stock JHWJ, Yogo M. A survey of weak instruments and weak identification in generalized method of moments. *J Bus Econ Stat*. 2002;20(4):518-529. doi:10.1198/073500102288618658
33. Burgess S, Butterworth A, Thompson SG. Mendelian randomization analysis with multiple genetic variants using summarized data. *Genet Epidemiol*. 2013;37(7):658-665. doi:10.1002/gepi.21758
34. Burgess S, Thompson DJ, Rees JMB, Day FR, Perry JR, Ong KK. Dissecting causal pathways using mendelian randomization with summarized genetic data: application to age at menarche and risk of breast cancer. *Genetics*. 2017;207(2):481-487.
35. Dale CE, Fatemifar G, Palmer TM, et al; UCLEB Consortium; METASTROKE Consortium. Causal associations of adiposity and body fat distribution with coronary heart disease, stroke subtypes, and type 2 diabetes mellitus: a mendelian randomization analysis. *Circulation*. 2017;135(24):2373-2388. doi:10.1161/CIRCULATIONAHA.116.026560
36. Danforth E Jr. Failure of adipocyte differentiation causes type II diabetes mellitus? *Nat Genet*. 2000;26(1):13. doi:10.1038/79111
37. Virtue S, Vidal-Puig A. Adipose tissue expandability, lipotoxicity and the metabolic syndrome: an allostatic perspective. *Biochim Biophys Acta*. 2010;1801(3):338-349. doi:10.1016/j.bbali.2009.12.006
38. Haslam DW, James WP. Obesity. *Lancet*. 2005;366(9492):1197-1209. doi:10.1016/S0140-6736(05)67483-1
39. Kan M, Auer PL, Wang GT, et al; NHLBI-Exome Sequencing Project. Rare variant associations with waist-to-hip ratio in European-American and African-American women from the NHLBI-Exome Sequencing Project. *Eur J Hum Genet*. 2016;24(8):1181-1187. doi:10.1038/ejhg.2015.272
40. Chu AY, Deng X, Fisher VA, et al. Multiethnic genome-wide meta-analysis of ectopic fat depots identifies loci associated with adipocyte development and differentiation. *Nat Genet*. 2017;49(1):125-130. doi:10.1038/ng.3738